



## Southwest ABLA Resource Center

# Exposure

## Helping Students with Voting



With the upcoming Presidential election, many ABLA programs are helping students connect to voting information.

One extensive site to help with voter information is [www.vote411.org](http://www.vote411.org). Managed by the League of Women Voters, it is an easy-to-use, nonpartisan one-stop for information on voting and elections.

Here you can search by state and then find local polling information. It even links to a map.

You can also access information on candidates via the main League of Women Voters site at [www.lwv.org](http://www.lwv.org).

**In Ohio, the deadline to register to vote in the November election is Monday, October 6.**

## Celebrate Constitution Day!

September 17 marks the 221st anniversary of the U.S. Constitution. Did you know these fun facts?

- Thirty-nine delegates signed the document
- The debate over the Constitution took place in Philadelphia's Independence Hall
- The youngest delegate was Jonathan Dayton of New Jersey who was 26, and the oldest delegate was Pennsylvania's Benjamin Franklin who was 81.
- Rhode Island and the Providence Plantations did not send delegates to the Constitutional Convention.
- Delaware was the first state to ratify the U.S. Constitution.
- New Hampshire was the 9th state to ratify which put the Constitution into effect (June 21, 1788).



To learn more and to get lesson ideas, please visit these sites:  
[www.archives.gov/education/lessons/constitution-day/index.html](http://www.archives.gov/education/lessons/constitution-day/index.html)  
[www.constitutionday.cc](http://www.constitutionday.cc)

September  
2008

### Inside this issue:

<a href="#">Monthly Ideas</a>	2
<a href="#">Staff Appreciation Corner</a>	2
<a href="#">Library Resources</a>	2
<a href="#">6th Annual Professional Day</a>	3
<a href="#">Food &amp; Cancellation Policies</a>	3
<a href="#">GED 2012 Information</a>	4
<a href="#">Great Courses: Basic Math</a>	4
<a href="#">Health Care Resources</a>	4
<a href="#">Calendar of Events</a>	5
<a href="#">Alternative PD</a>	5

## Help from RCN

While this newsletter spotlights SWRC offerings and specialty areas of Reading and Writing, please note that each of the Regional Resource Centers has an online library and training calendar available for your use.

### NWRC

- Assessment
- Transitions

### NERC

- ESOL

### C/SE RC

- Special Needs
- GED

**OLRC** provides access to resources on:

- Family Literacy
- Math
- Eureka! Lesson plans
- Technology

All the RCN has to offer is only a click away at [www.ohioable.org](http://www.ohioable.org).

## Spotlight on Library Resources

### HEALTH LITERACY STUDY CIRCLES: Skills for Chronic Disease Management

These study circles were created by a team of educators and researchers from public health and adult education. Referred to as "Health and Adult Literacy and Learning," or HALL, the team is based at the Harvard School of Public Health and is part of the National Center for Study of Adult Learning Literacy (NCSALL).

### START YOUR JOB: Promptness and Other Skills Employers Seek

This video uses three settings - an office, a health care facility, and a hotel lobby - to explain the importance of the employee-employer relationship and how it can benefit both worker and supervisor. 17 minutes.

### STEP FORWARD: Language for Everyday Life

This ESOL series from Pearson/Longman Publishing emphasizes the language skills needed to be successful at home, in the community, and at work. The series works from these key concepts: materials must support multilevel instruction; prior knowledge questions are a valuable teaching tool; vocabulary, grammar and pronunciation skills play an essential role in language learning; effective instruction requires a variety of instructional techniques and strategies to engage learners. Books 1-4 are available.

### HOW WE CROSSED THE WEST: Adventures of Lewis and Clark

Students often think studying history is boring. So add some supplementary materials to your curriculum with trade books such as *How We Crossed the West*. This account of the 1804-1805 Lewis and Clark journey has colorful, action-filled pictures, and a text drawn from journals and letters written by Lewis and Clark. The book makes a fine introduction to one of the most exciting chapters in American History.

### OCCUMATICS

*Occumatics* was developed as a method of showing students the complete cycle of math from learning the facts to using math as an adult in the workforce. Activities are provided that require students to apply math skills to real life situations. Going beyond math, *Occumatics* introduces 18 occupations and how people in these occupations would use math on their jobs.

## September Holidays and Celebrations

**September 8 is International Literacy Day**—this year's theme is "Literacy is the Best Remedy." According to UNESCO, adult literacy education often leads to better prenatal and postnatal care of children, reductions in low birth rate infants, and better home medical care, thereby contributing to lowered medical costs for children and fewer learning problems in school. To learn more about International Literacy Day, visit [www.unesco.org](http://www.unesco.org), then click on "Education," then "Literacy."

**September is Update Your Resume Month** — resumes are a means to show employers your experience, education and skills. To help students learn more about resumes, go to [http://careerplanning.about.com/od/resumewriting/a/resume\\_writing.htm](http://careerplanning.about.com/od/resumewriting/a/resume_writing.htm)

To check out other September events, visit:

- <http://www.holidayinsights.com/>
- <http://library.thinkquest.org/2886/INDEX.HTM>
- <http://brownielocks.com/month2.html>

---

## Staff Appreciation Corner for September

Looking for a timely way to help your staff? Try providing them with a flash drive.

These small, portable drives are great for transferring lesson plans, documents and attendance forms from place to place. Sizes vary, but a 1 GB or higher is recommended. This allows for graphics, media and other information to be easily stored. Depending on the design, you can also attach these drives to a lanyard or key chain.

Prices start at around \$6 for a 1 GB model and can be found at office and retail stores.



# Southwest ABLÉ

## 6th Annual Professional Day

Sinclair Community College  
Friday, October 17, 2008  
9:00 am – 3:30 pm  
(8:30 am – Registration)  
Building 12

Please join us for a day  
of learning, networking and fun!

Sessions for Administrators,  
Teachers and Support Staff.

Vendors will share  
their latest resources.

Morning beverages will be provided.  
Box lunches will be available for \$7.00  
(cash or check only).

To register, visit our website:  
[www.sinclair.edu/facilities/swable](http://www.sinclair.edu/facilities/swable)  
**Deadline:** October 1, 2008

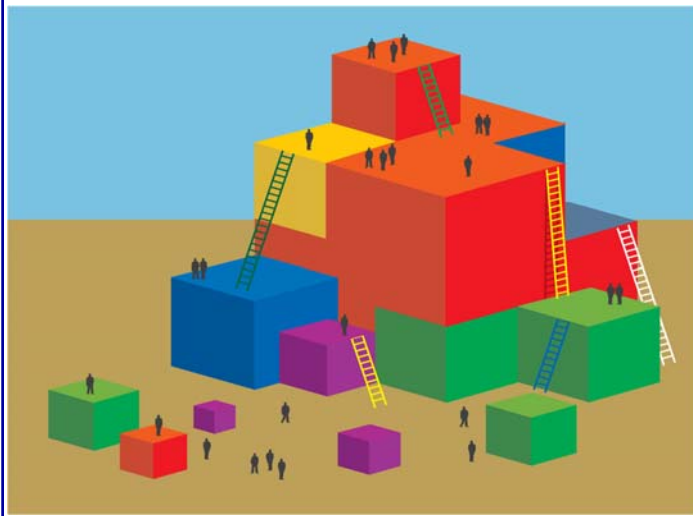
---

## RCN Food Policy

Effective July 1, 2008, the Resource Center Network will no longer provide complimentary food at any training or meeting. We will, however, continue to offer beverages at the beginning of trainings and meetings. **Depending on the event and the venue**, participants will have the following options for meals/additional beverages:

- Pay a registration fee for the event which would cover the cost of breakfast and/or lunch. The Resource Center would make sure that the meals were available.
- Pool money together to place an order for a vendor to deliver to the site.
- Bring your own lunch to the event (Note: a refrigerator and/or microwave may not be available on site).
- Leave the training site and eat at a local restaurant within an allotted one hour lunch break.

Watch for more information on venues/costs as part of each training's registration details. If you have any questions, please contact SWRC at 800-558-5374.



*Change starts  
when someone sees  
the next step.*

~William Drayton

## Did You Know?

- Over 170 attendees come to Professional Day—so don't miss out! Get registered today.
- The schedule this year includes time for attendees to gather according to their ABLÉ position.
- Strands are available for ESOL, GED, Leadership, Support Staff and Classroom Content.
- All participants will receive a professional resource.

---

## RCN Cancellation Policy

**As a reminder:** All participants must pre-register for training and other events. Registered persons must notify the Southwest ABLÉ Resource Center of any cancellations **24 hours prior** to the event or they will be **billed** for material costs. To avoid incurring costs, an alternate attendee may replace a registered participant.

This policy went into effect November 1, 2007. If you have any questions on this policy, please contact the SWRC at 800-558-5374.

## New 2012 Series GED Tests

Resource materials for the new 2012 series GED Tests are now available. Go online to [www.GEDtest.org/2012](http://www.GEDtest.org/2012) for the official announcement concerning the upcoming new test (fifth edition) and a series of commonly asked questions available in a one-page downloadable or full-length format. These documents help answer questions for prospective and current test-takers as well as other key audiences.

GEDTS has separated information out for students (GED Test Takers) and professionals (GED Examiners, Teachers, Administrators). They are seeking comments on the site and on the information. If you would like to make suggestions, please email [chris\\_turner@ace.nche.edu](mailto:chris_turner@ace.nche.edu). You can comment on either section.

---

## Health Literacy Resources for ESOL

**Staying Healthy** is a new health literacy curriculum which integrates health and nutrition into adult ESOL instruction. Developed through a grant from the Florida Department of Education, these materials consist of a teacher's guide and easy-to-read student resource book.

Written at the 4-5th grade reading level, this resource book has a host of photographs and illustrations to help English learners better grasp the concepts and vocabulary presented in the publication. With easy-to-read charts and tables, practice dialogs, and "how to learn more" sections, students are encouraged to seek additional information and assistance from expert healthcare professionals; locate free and low-cost healthcare facilities; engage in open communication and take on a more active role in their own health care management and healthy lifestyle. Click [here](#) to access this resource.

**Project Care** is a website for high-intermediate to advanced English language learners who want to learn about caring for others while improving their communication with medical personnel. The website provides audio and video for listening practice, vocabulary development, project ideas and links to related health information. Free activities on the site will help students learn more about health care issues while practicing English. (Resources are also available for purchase on the site.) Click [here](#) to open the site.

---

## Great Courses: Basic Math

Want to improve your math knowledge in a particular content area? Want to help your students succeed in college level math? Do you have students who want to attend college and need a high level class in mathematics? If you answered "yes" to any of these questions, the "Great Courses - Basic Math" trainings are what you're looking for.

The purpose of the Basic Math course is to prepare students for Algebra 1, but the DVDs also provide a great review of the skills necessary for the GED test. Teachers will get lots of ideas for presenting lessons along with a great review of basic math. ABLE students will learn the content necessary for the GED.

The 30 lessons have been divided into six alternate delivery activities/trainings. Teachers can do one or all six of these activities depending on their math needs. Each activity is made up of five 30 minute lessons. The DVD provides opportunities for practicing the math content during instruction, and there is a short assessment at the end of each lesson. Vocabulary is stressed throughout the series of lessons, and the math content is related to real life situations.

To register, please go to [www.neable.org](http://www.neable.org) to the training calendar and click on Alternative Delivery Professional Development. If you have any questions, contact NERC at 800-361-7076.

## Southwest ABLE Resource Center

c/o Sinclair Community College  
444 West Third Street  
Room 6130  
Dayton, Ohio 45402

Phone: 937-512-5375 or  
800-558-5374 (Ohio only)  
Fax: 937-512-3434



Visit us on  
the web:

[www.sinclair.edu/  
facilities/swable](http://www.sinclair.edu/facilities/swable)

### Staff

**Lynn Reese**  
Coordinator

(937)512-5202

[lynn.reese@sinclair.edu](mailto:lynn.reese@sinclair.edu)

**Kathy Knall**

Researcher/Trainer  
(937)512-5364

[kathy.knall@sinclair.edu](mailto:kathy.knall@sinclair.edu)

**Jennifer Davis**

Professional Development  
Specialist

(937)512-5374

[jennifer.davis@sinclair.edu](mailto:jennifer.davis@sinclair.edu)

**Ann Marie Convey**

Events Specialist  
(937)512-5375

[ann.convey@sinclair.edu](mailto:ann.convey@sinclair.edu)

**Ottilia Zimbowa**

Clerical Assistant  
(937)512-2326

[ottilia.zimbowa@sinclair.edu](mailto:ottilia.zimbowa@sinclair.edu)

# Calendar of Events

Date	Event	Location
Sept 6	Math Kick-Off	Sinclair Community College
Sept 12	New Teacher Orientation (NTO)	Sinclair Community College
Oct 14-15	Fall Directors' Meeting	Crown Plaza, Dublin, Ohio
Oct 17	SWABLE Professional Day	Sinclair Community College
Oct 30	Statewide RCN Training Day	Columbus area
Oct 31- Nov 1	TESOL Conference	Columbus
Nov 14	Technology 102 (Intermediate)	Sinclair Community College
Dec 12	Reading Strategies for Word Skills and Vocabulary	TBD

## SWABLE's Ongoing Alternative PD

Online Training	Media Packages
REA 101: Reading Overview	How to Improve Your Questioning Techniques
WRT101: Writing Overview	Building Academic Background Knowledge (Vocabulary)
Writing for the GED (from KET)	Comprehending Content
	Thoughtful Reading
	Reading in the Content Areas
	Focus on Spelling

We also have **Literacy Trunks** for check-out in our library. Trunks contain "ready-to-go" lessons and activities, including user's guide, resources, handouts and online sites. Titles include: *Flip Books; Map Skills; Earthquakes; Graphic Organizers; and Reading, Writing and MATH!*

For information on upcoming trainings, please contact SWABLE at 800-558-5374 or 937-512-5375. You can also visit [www.ohioable.org](http://www.ohioable.org) to register for workshops across Ohio and to see what other Resource Centers are offering for Alternative PD.