



## Southwest ABLA Resource Center

# Exposure

Nov-Dec 2011

## Changes at SWRC

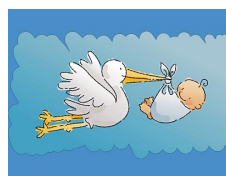
The next few weeks will see big changes at the Southwest ABLA Resource Center as two of our staff members leave us to do other things. Unfortunately, we can't really be upset about it but it does make us feel sad! Please join us in saying thanks and farewell to both ladies by emailing them at [jamie.gabbard@sinclair.edu](mailto:jamie.gabbard@sinclair.edu) and [kathy.knall@sinclair.edu](mailto:kathy.knall@sinclair.edu).

***"A baby is an angel whose wings decrease as his legs increase."***

- Author Unknown

Jamie Gabbard has been our administrative assistant since October, 2010. She came into the job and in no time, we forgot that she hadn't been with us all along. Her office skills are excellent; communication is a breeze but more than that, she is a believer in what ABLA does for students.

However, as the mother of two year old Benjamin and the soon to be Mom of a 2<sup>nd</sup> baby boy, she has opted to stay home and fill her days with all of the wonderful things that happen when you share your days with two little ones. We will miss her as she leaves us on November 23<sup>rd</sup> but wish her and her family all the best.



***"Don't simply retire from something; have something to retire to."***

- Harry Emerson Fosdick



People sometimes talk about "institutional memory" when referring to someone who has been around for quite a long time and knows all of the stories about a place. When Kathy Knall shuts her office door for the last time on December 30, the Southwest ABLA Resource Center will be losing the person who holds all of that knowledge. Kathy started her ABLA career in Illinois, then taught in the Springfield program. She joined the Southwest Resource Center shortly after the Resource Center started in the mid 1990's.

Kathy is truly a life-long learner. She loves nothing more than to delve into the library to hunt for a resource that someone has asked for or to go deep into a website search to get an answer to a question. That fascination with learning helped her prepare and deliver hundreds of trainings, write plenty of articles and contribute ideas in all of the 1,000 meetings she has probably attended over the years. She has been a friend to the ABLA system, a friend to all ABLA staff across the state but especially to us in the Southwest Region. We will miss her but know that retirement will truly be her next big adventure.



Looking for a website where you download and print literary works for your classroom? For FREE?

Bartleby's is one of the most widely used and highly respected websites for classic literature, poetry and reference works.

You can get works from Robert Frost's poetry to *Gray's Anatomy* to *The World Fact Book*.

Searching is easy, by author, title, or subject.

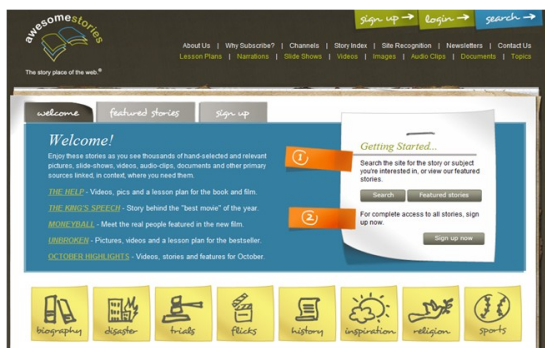
Check it out at [www.bartleby.com](http://www.bartleby.com)



## Reading Tip



Looking for online reading opportunities for students? What a great site to use for delivering interactive reading lessons? Check out Awesome Stories!



Each story on the site links to online primary source materials which are positioned in the context to enhance reading comprehension, understanding and enjoyment. Lesson plans are also available to help teachers plan multi-day usage of the site.

Visit [www.awesomestories.com](http://www.awesomestories.com) to experience reading in a different way.

## Math Tip



Have you heard about Yay Math?

The YAY MATH video project is a free service dedicated to meeting the growing need for math success in a positive, lively, and confidence boosting way. YAY MATH stands as the only online math video lesson series filmed in a live classroom, with real student interaction. Since its inception three years ago, and well over a million YouTube views since, gone are the days of the "I just can't do math" style of thinking.

What separates Yay Math from other programs are both the students in the videos, as well as the viewers online. The live student interaction sets this project apart from any other online tutorial out there, making it genuine and offering the feeling that anyone watching is in the room too.



## Technology Tip



*We often hear from teachers that they want to use an Internet-based tool to deliver a lesson. They go to the site, but can't remember their user name and password. What can help them?*

### **The problem:**

- An ever growing list of websites and Web 2.0 tools are available for educators
- Many sites, even free ones, require accounts to use
- Each site has different rules for user names and passwords (e.g., alpha and numeric characters, case sensitivity, 6 or 8 or 12 or 20 character passwords)

### **Possible solutions (from low-tech to high-tech):**

- Use a small address book to keep record of websites and your associated user names and passwords.
- Print out the sign-in page with your user name and passwords written in. Place in a binder.
- Keep a running Word document with a table of hyperlinks to your favorite sites and notes on user names and passwords. Store this document on a flash drive that you carry with you.

Website	User Name	Password

- Place user names and passwords in the notes section of your bookmarks saved to the cloud (e.g., iGoogle bookmarks, Delicious)

## Writing Tip



When you give feedback to your students on their writing, be sure that you are addressing content as well as mechanics and grammar. We often focus on the mechanics and grammar because those mistakes seem to “jump” off the page; content issues are less obvious but are just as important.

### Tips for providing feedback on content

- Have students hand in **self-assessments of their writing** when they hand in their drafts.
- On drafts of student papers, provide **specific written comments** that students can use when they revise.
- Provide opportunities for students to **give each other feedback** on the content of their drafts. Instructors can guide students by modeling how to respond to papers.

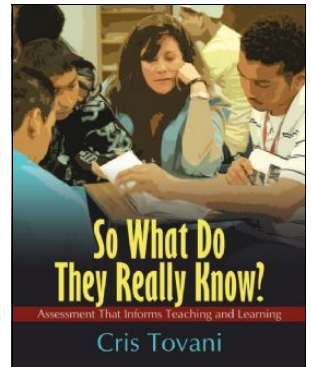
### Tips for providing feedback on mechanics and grammar

- Don't "correct" your students' errors. Instead, put a check near the error and encourage the author to "correct" it while working on the next draft.
- Don't address every error; select two or three types of errors and help the student conquer the related skills before moving on to other errors.

## Spotlight on Library Materials

### *So What Do They Really Know? Assessment that Informs Teaching and Learning*

Well-known educator, Cris Tovani, explores the complex issue of monitoring, assessing, and grading students' thinking and performance with fairness and fidelity. Like all teachers, Cris struggles to balance her student-centered instruction with system mandates. Her recommendations are realistic and practical; she understands what is manageable and sustainable.



Cris describes the systems and structure she uses in her own classroom and shows teachers how to use assessments to monitor student growth and provide targeted feedback that enables students to master content goals. She also shares ways to bring students into the assessment cycle so they can monitor their own learning, maximizing motivation and engagement.

Cris's willingness to share her own struggles continues to be a hallmark of her work. Teachers will recognize their own students and the challenges they face as they join Cris on the journey to figure out how to raise student achievement.

## New Teacher Orientation

The SW Resource Center held its autumn New Teacher Orientation on September 30.

We are pleased to welcome (left to right) Chris Brenneman; Ben Sheehan; Candace Sharp; Gary McDowell; Sue Plummer; Theresa Laselle; Patricia Emerson.



## New Support Staff Orientation

Please plan ahead for New Support Staff Orientation. This is a required series for new ABLE support staff that includes four parts. Each session focuses on one of four topics: professional development, communication skills, motivation and retention of adult students, and accountability. All sessions in the series are conducted via Elluminate, an online webconferencing tool. Participants will receive information on how to access Elluminate prior to the session. Below is a full schedule of offerings for each of the four sessions, so please plan ahead, and register as soon as possible.

### Session 1: Intro to PD (Region 3 only)

- 12/1/2011 10:00am-11:00am
- 12/1/2011 1:00pm- 2:00 pm

### Session 2: Communication (Statewide)

- 01/24/2012 10:00am-11:00am
- 01/26/2012 1:00pm-2:00pm

### Session 3: Instructional Support (Statewide)

- 02/15/2012 1:00pm-2:00pm
- 02/16/2012 9:00am-10:00am

### Session 4: Accountability (Statewide)

- 03/07/2012 9:30am – 11:00 am
- 03/15/2012 2:00pm-3:30pm

## New Elluminate Web Conference Training

Elluminate has collaborated with Blackboard to create a more comprehensive web conferencing system called Blackboard Collaborate. This web conferencing tool has a new interface and other features that were not included in the previous version of Elluminate. Northwest ABLE Resource Center is offering a webinar for those who need an up-to-date training on the new features or just to learn about the platform in general. There are two sessions with information specific to Moderators, and two sessions with information specific to Participants.

### Moderator Sessions

- 11/17/2011 11:00am-12:00pm
- 12/15/2011 11:00am-12:00pm

### Participant Sessions

- 11/30/2011 1:00pm-2:00pm
- 12/13/2011 2:00pm-3:00pm

To register for any of the Elluminate Sessions listed above, please visit the Calendar of Events at [www.ohioable.org](http://www.ohioable.org).

---

## Thanksgiving – An American Holiday

No matter what your age or where you're from, there is always something more to learn about Thanksgiving. Whether helping students new to the United States or those native born, this website provides information about a truly American holiday.

Did you know?

- Benjamin Franklin thought the wild turkey would be a more appropriate national symbol for the new country than the bald eagle.
- The first Macy's parade was to launch the Christmas shopping season in 1924.
- Minnesota is the top turkey-producing state but Illinois grows the most pumpkins.
- The Mayflower carried 100 people when it left England in September 1620.
- More than half of the English settlers died during that first winter in America, as a result of poor nutrition and housing that offered too little protection from the harsh winter.

The site, <http://www.history.com/topics/pilgrims>, has plenty of facts and details about how we came to have this November holiday. It also sheds light on some myths that surround the day. This site reminds us of the differences between what we do now in 2011 and what the reality was in 1621. Enjoy using this with your students in a variety of ways.

## Southwest ABLEResource Center

c/o Sinclair Community College  
444 West Third Street  
Room 6130  
Dayton, Ohio 45402

Phone: 937-512-5375 or  
800-558-5374 (Ohio only)  
Fax: 937-512-3434



**Visit us on  
the web:**

[www.sinclair.edu/  
facilities/swable](http://www.sinclair.edu/facilities/swable)

### Staff

**Lynn Reese**

*Coordinator*  
(937)512-5202

[lynn.reese@sinclair.edu](mailto:lynn.reese@sinclair.edu)

**Kathy Knall**

*Researcher/Trainer*  
(937)512-5364

[kathy.knall@sinclair.edu](mailto:kathy.knall@sinclair.edu)

**Jennifer Davis**

*Professional Development  
Specialist*  
(937)512-5374

[jennifer.davis@sinclair.edu](mailto:jennifer.davis@sinclair.edu)

**Jamie Gabbard**

*Administrative Assistant*  
(937)512-5375

[jamie.gabbard@sinclair.edu](mailto:jamie.gabbard@sinclair.edu)

Please contact SWRC with training questions. You can also visit [www.ohioable.org](http://www.ohioable.org) to register for workshops across Ohio and to see what other Resource Centers are offering for Alternative PD.

## FY12 SWRC Professional Development Calendar

Date	Event
12/1/11	New Support Staff Orientation: Intro to PD (Online)
12/2/11	Working with Intermediate Readers (Middletown)
12/12/11	Regional Administrators' Meeting (Online)

Go to [www.ohioable.org](http://www.ohioable.org) to register

## Ongoing Alternative PD

There are over 130 self-directed options for Professional Development available on the RCN Calendar of Events. If you are looking to refresh your skills or build new knowledge of topics relevant to ABLER, be sure to review these options which include:



**Book Reviews**



**Online Courses**



**Webinars**



**Media Packages/DVDS**



**From  
the  
Staff  
of  
SWRC**