

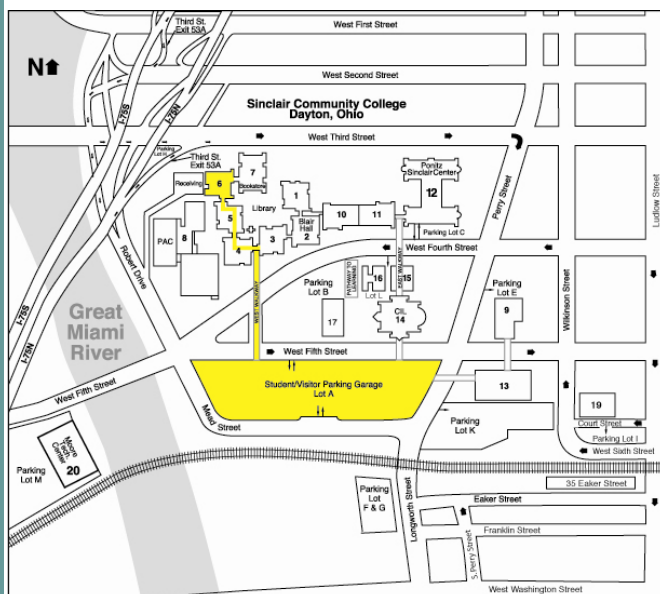


## Southwest ABLA Resource Center

# Exposure

## SWRC's Campus Move to Building 6

The boxes are unpacked and our offices are back up to speed from our summer move. SWRC offices are now located on the first floor of Building 6 in Room 130. Our phone, fax and emails remain the same.



### To find our new offices:

- Park in Lot A (Student/Visitor Lot) on Fifth St.
- Take the Walkway on the 3rd floor of the garage to main campus.
- Turn left at the end of the Walkway and follow the overhead signs to Building 6.
- Take stairs or elevator to 1st floor.
- Come to room 130.

We look forward to your next visit!

## August 2008 Update

### Website Update

The revamped Sinclair website which houses our SWRC site is up and running, but the editing functions are still inactive. If you need current information or forms (including FY09 PD forms), please contact SWRC directly. We apologize for any inconvenience.



## OAACE Update

Lynne Alexander, Director of London City ABLA, is our OAACE representative for the Southwest Region.

If you have any questions about OAACE or information to be shared, please contact her at [teach179@aol.com](mailto:teach179@aol.com).

You can also access the latest OAACE news via their website at [www.oaace.org](http://www.oaace.org).

Watch for membership and conference news in upcoming issues.

## Some "Food" for Thought

Effective July 1, 2008, the Resource Center Network will no longer be able to provide food at any training or meeting. We will, however, offer complimentary beverages at the beginning of trainings and meetings.

**Depending on the event and the venue**, participants will have the following options for meals/additional beverages:

- Pay a registration fee for the event which would cover the cost of breakfast and/or lunch. The Resource Center would make sure that the meals were available.
- Pool money together to place an order for a vendor to deliver to the site.
- Bring your own lunch to the event (Note: refrigerator and/or microwave may not be available on site).
- Leave the training site and eat at a local restaurant within an allotted one hour lunch break.

Watch for more information on venues/costs as part of each training's registration details. If you have any questions, please contact SWRC at 800-558-5374.

## Southwest ABLEResource Center

c/o Sinclair Community College  
444 West Third Street  
Room 6130  
Dayton, Ohio 45402

Phone: 937-512-5375 or  
800-558-5374 (Ohio only)  
Fax: 937-512-3434



Visit us on  
the web:

[www.sinclair.edu/  
facilities/swable](http://www.sinclair.edu/facilities/swable)

### Staff

**Lynn Reese**  
Coordinator

(937)512-5202

[lynn.reese@sinclair.edu](mailto:lynn.reese@sinclair.edu)

**Kathy Knall**

Researcher/Trainer

(937)512-5364

[kathy.knall@sinclair.edu](mailto:kathy.knall@sinclair.edu)

**Jennifer Davis**

Professional Development  
Specialist

(937)512-5374

[jennifer.davis@sinclair.edu](mailto:jennifer.davis@sinclair.edu)

**Ann Marie Convey**

Events Specialist

(937)512-5375

[ann.convey@sinclair.edu](mailto:ann.convey@sinclair.edu)

**Ottilia Zimbowa**

Clerical Assistant

(937)512-2326

[ottilia.zimbowa@sinclair.edu](mailto:ottilia.zimbowa@sinclair.edu)

# Calendar of Events

Date	Event	Location
Sept 6	Math Kick-Off	Sinclair Community College
Sept 12	New Teacher Orientation (NTO)	Sinclair Community College
Oct 14-15	Fall Directors' Meeting	TBD
Oct 17	SWABLE Professional Day	Sinclair Community College
Oct 30	Statewide RCN Training Day	Columbus area
Oct 31- Nov 1	TESOL Conference	Columbus
Nov 14	Technology 102 (Intermediate)	Sinclair Community College
Dec 12	Reading Strategies for Word Skills and Vocabulary (REA 102)	TBD

## SAVE THE DATE!

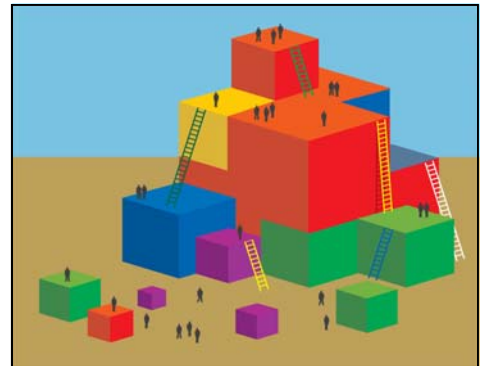
### 6th Annual Southwest ABLEResource Center Professional Day

**Friday, October 17**

9:00 am – 3:30 pm

(8:30 am – Registration)

**Box lunches will be  
available for purchase.**



*Change starts when  
someone sees the next step.*

-William Drayton

Please join us for a day of learning, networking and fun!  
Visit vendors and see the latest resources.

#### Strands Include:

- \* Classroom Content
- \* Support Services
- \* ESOL
- \* Leadership
- \* GED

## More information coming soon!