



USB Flash Drive Use with Sinclair Lab Computers

Information Technology Services has identified a usage problem with some USB flash drives and Sinclair lab computers. A number of various brands and types of these drives cannot be used with the campus lab computers.

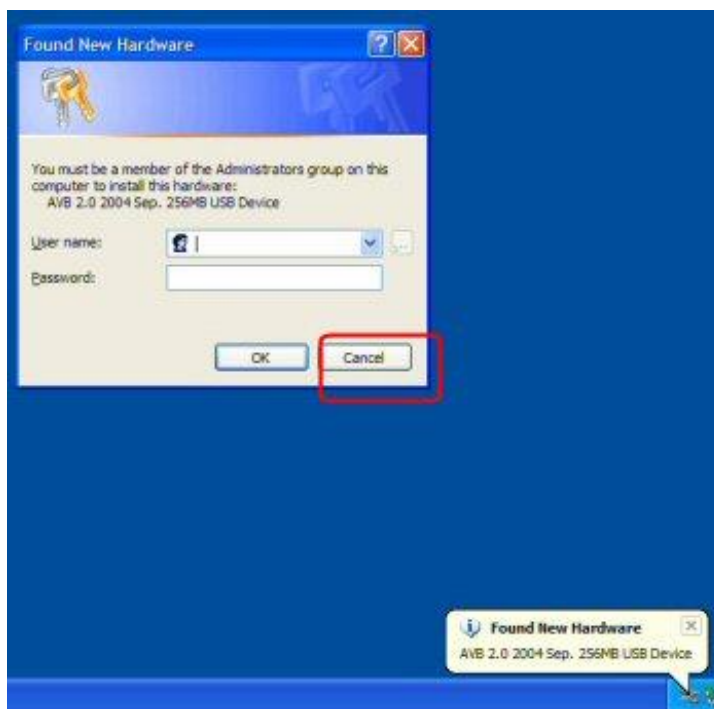
In response to this problem, ITS has tested a number of USB flash drives and developed a list of drives for use in the campus lab computers. In addition, these drives can be purchased at the College Bookstore in building 7. **The tested drives are listed below.**

NOTE: ITS has tested the drives listed below but cannot guarantee that they will not have future problems with use in campus labs.

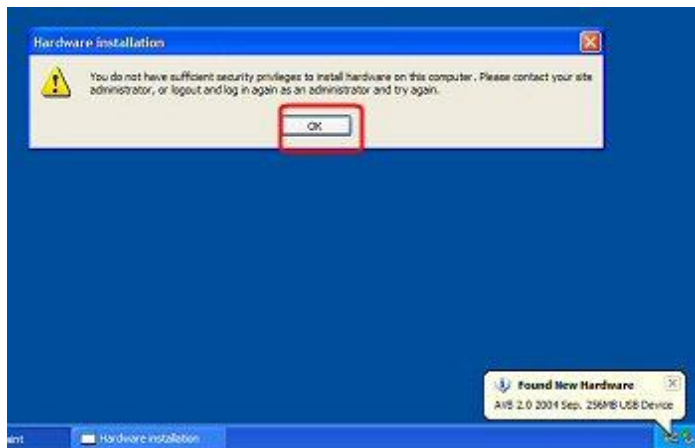
- AVB 1 GB USB 2.0 EnerDrive
- AVB 2 GB USB 2.0 EnerDrive
- AVB 4 GB USB 2.0 EnerDrive
- AVB 8 GB USB 2.0 EnerDrive
- AVB 16 GB USB 2.0 EnerDrive
- Memory Hog 2 GB USB drive
- Tribeca 4 GB USB drive
- Cruzer Micro 8 GB USB drive

To use one of the tested drives with a campus lab computer, **follow the instructions below:**

1. Plug the drive into one of the USB ports on the front of the computer.
2. You will see the following messages. You will be asked to login with an Administrator ID, this is not necessary, just **Click on Cancel.**



3. You will then see the following message. **Click on OK.**



4. You will then see this next message. **Click on the X in the right top corner to close it.**



5. Click on **My Computer**. The flash drive will be listed under drive F.



6. **NOTE:** If you experience problems with a drive, please ask the Lab staff for help.

NOTE: All USB or flash drives should be tested with computers in the campus labs to ensure that they will work with the lab computers.

In addition to using flash drives for saving files, all lab computers have a CD Writer drive. **Note:** Students must provide their own CD-Rs or CD-RWs. CDs can be purchased in the College Bookstore and at various campus snack bars.

For questions or additional information, contact the IT Help Desk at 937-512-HELP (4357) or at helpdesk@sinclair.edu.