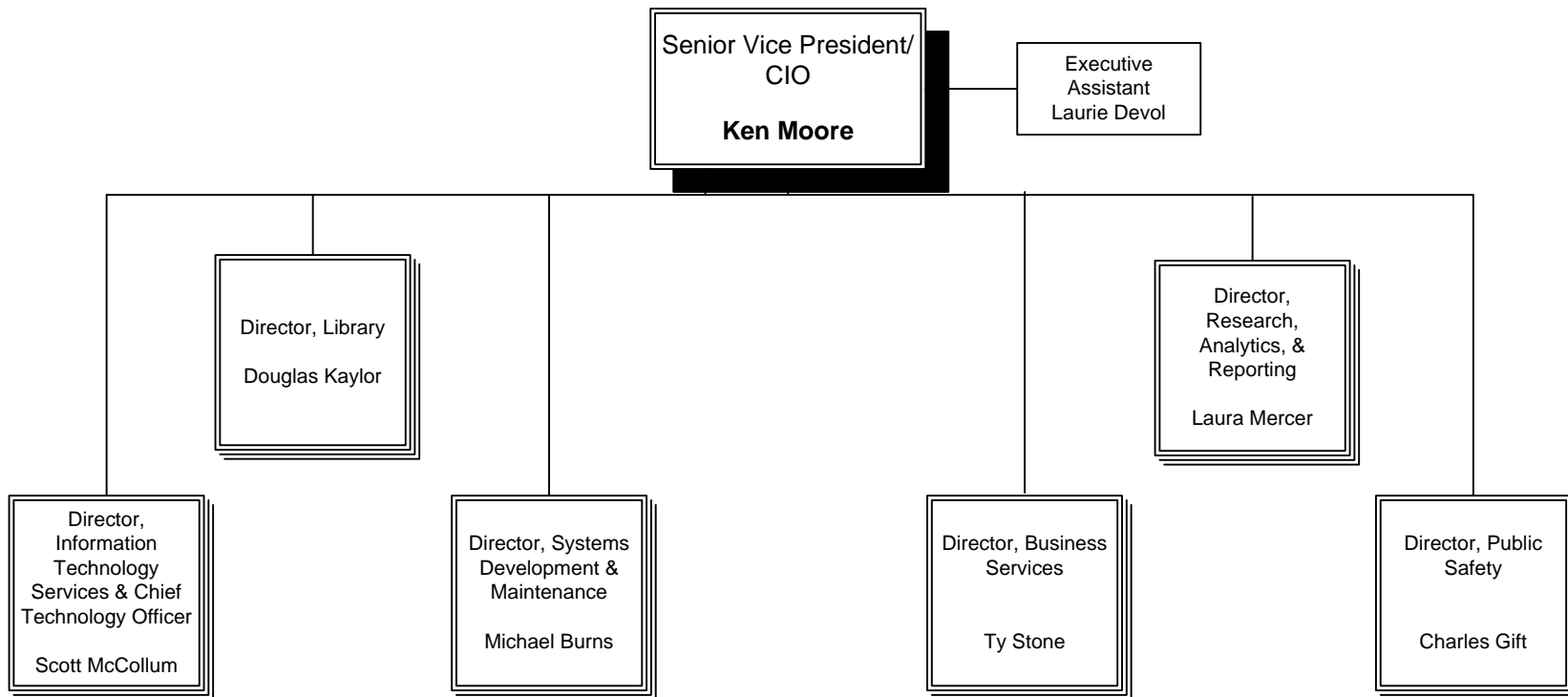
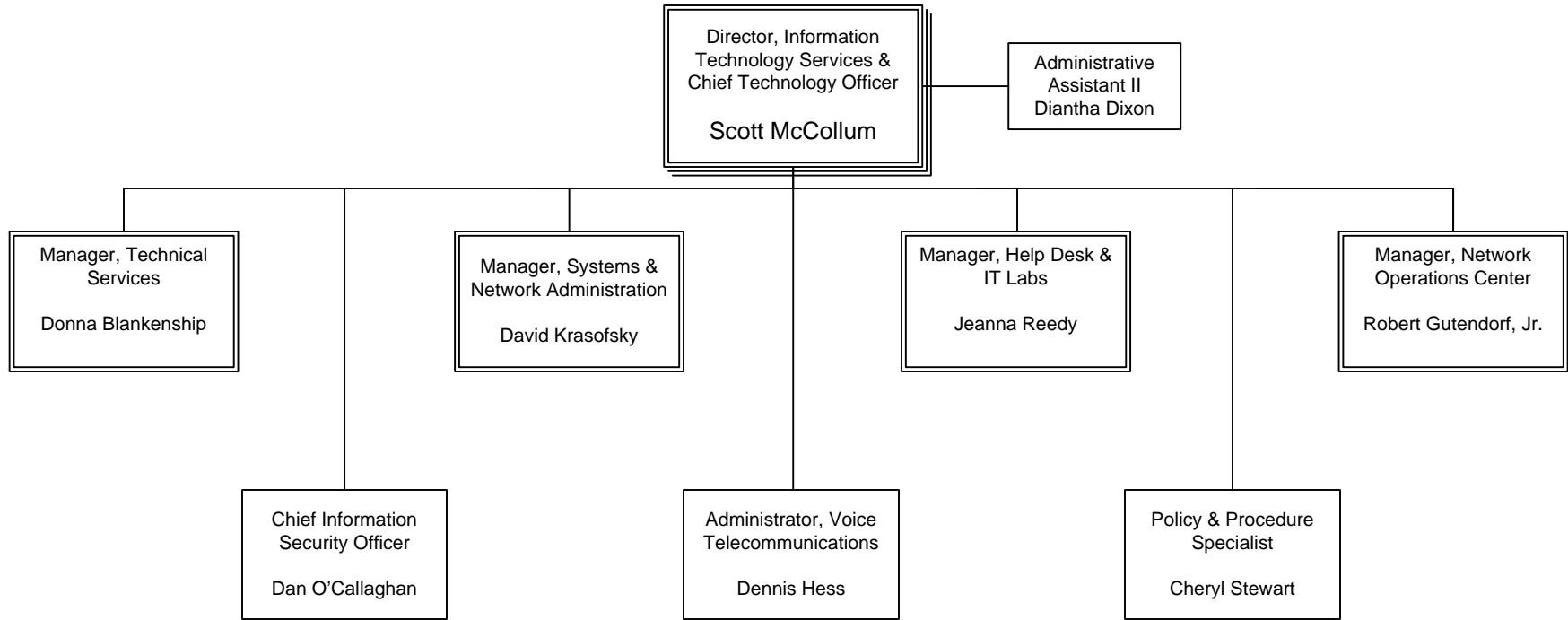


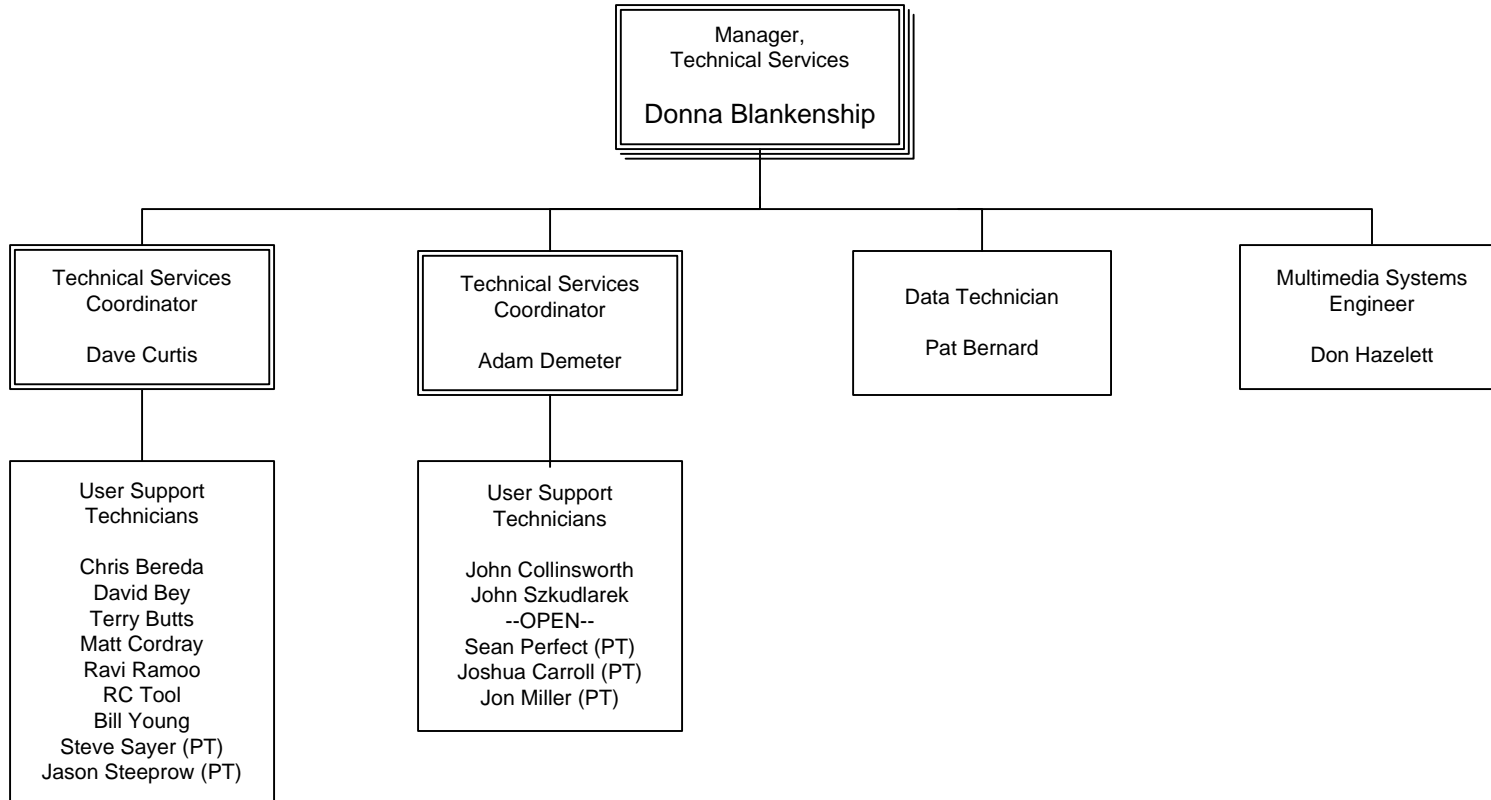
Senior Vice President Ken Moore's Division



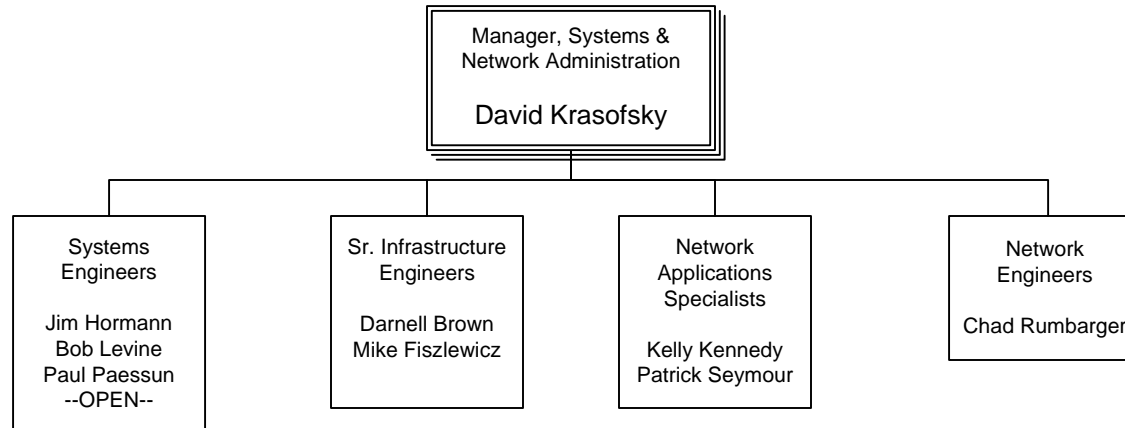
Senior Vice President Ken Moore's Division



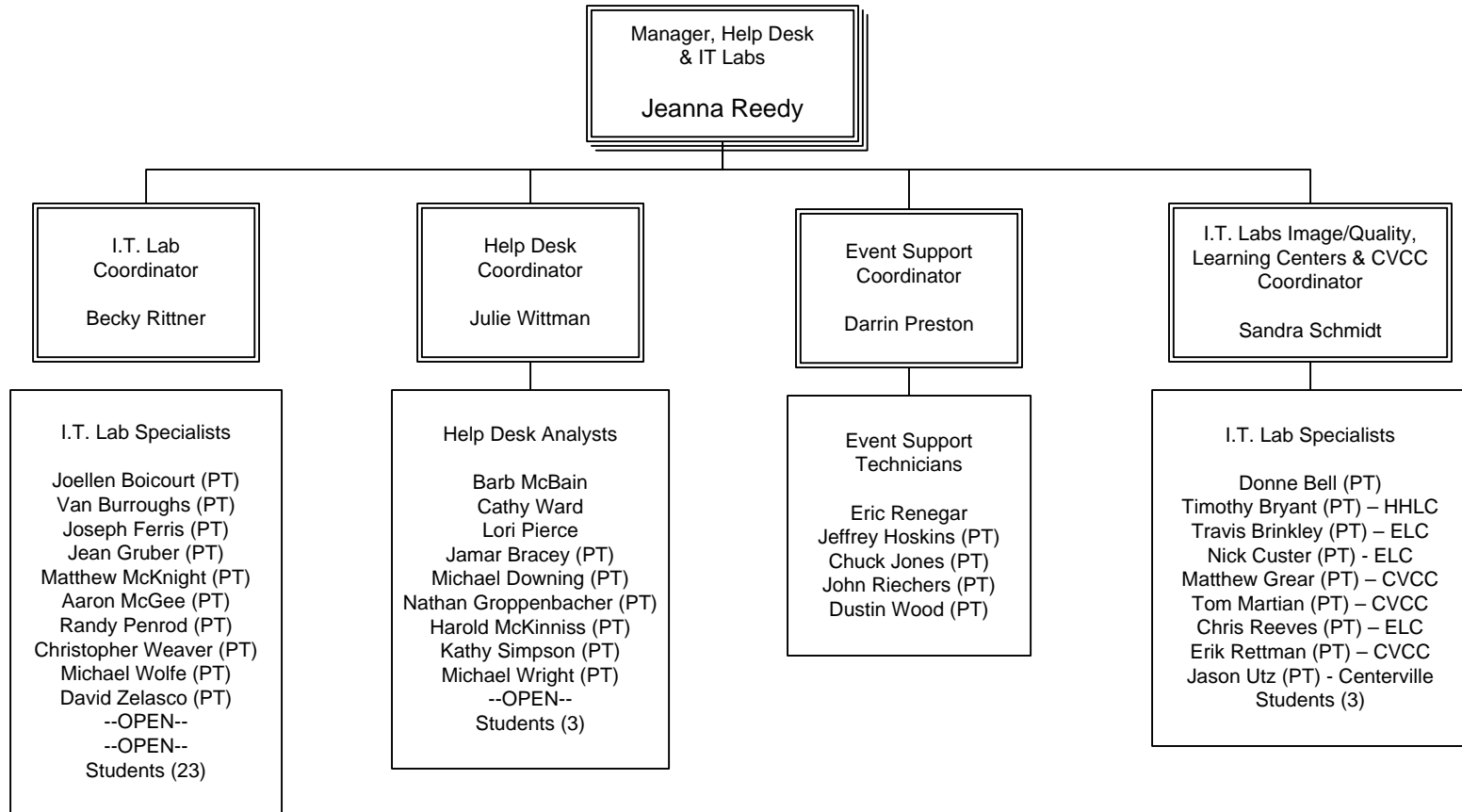
Senior Vice President Ken Moore's Division



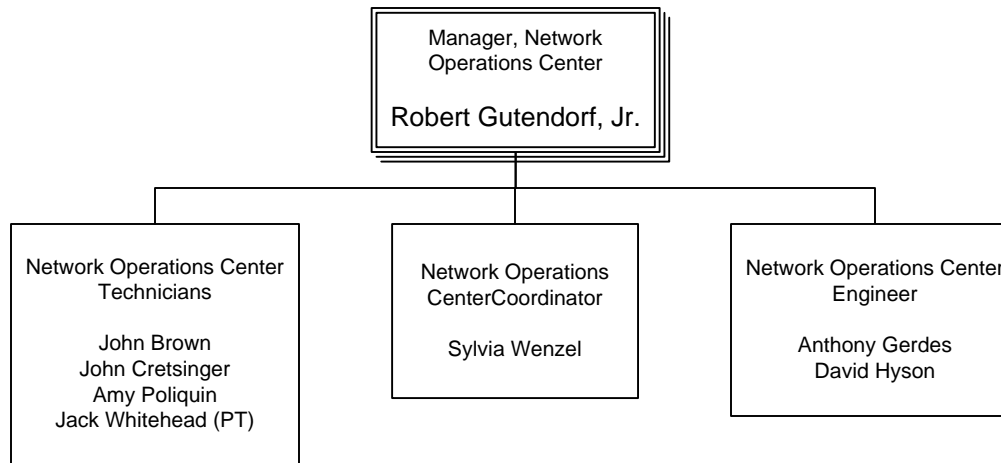
Senior Vice President Ken Moore's Division



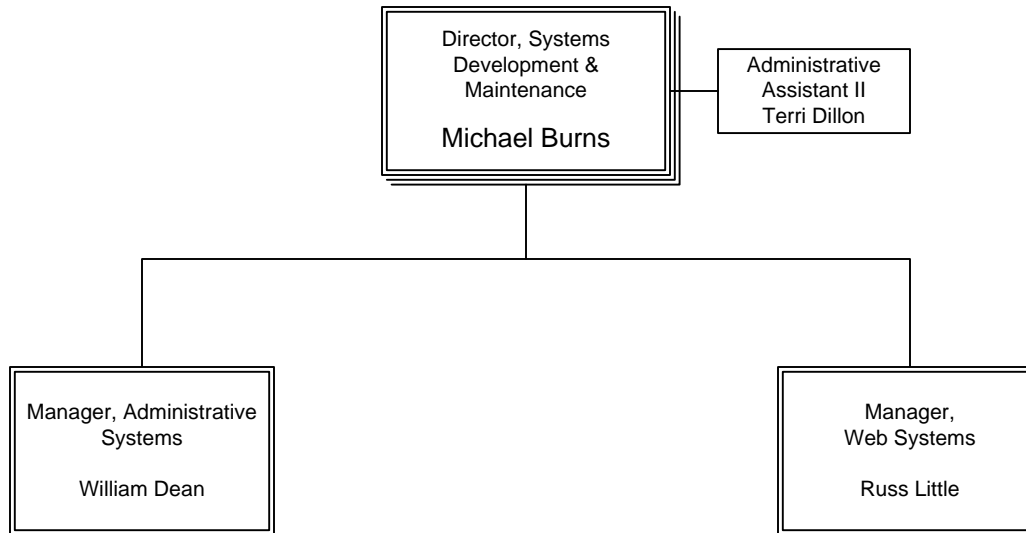
Senior Vice President Ken Moore's Division



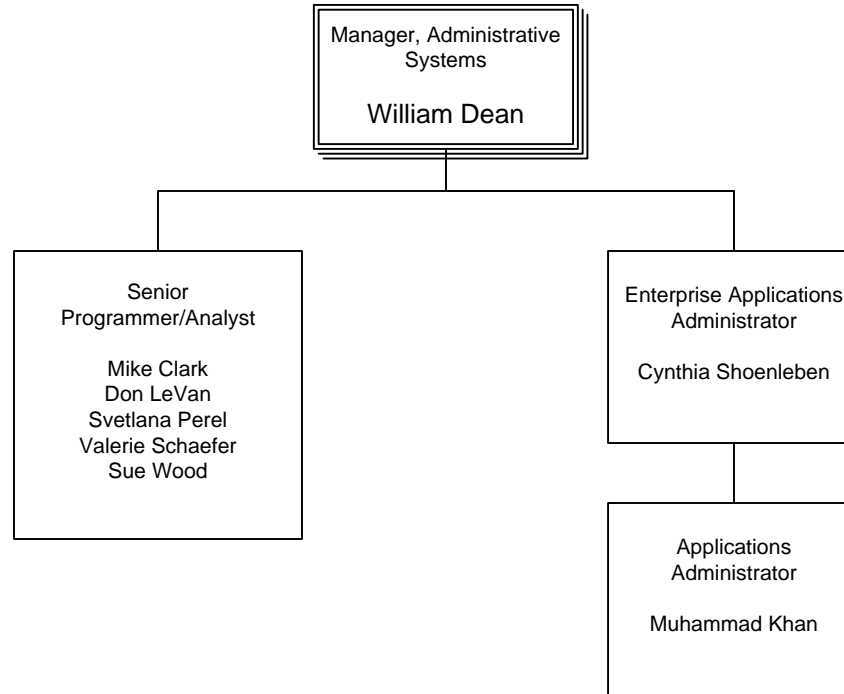
Senior Vice President Ken Moore's Division



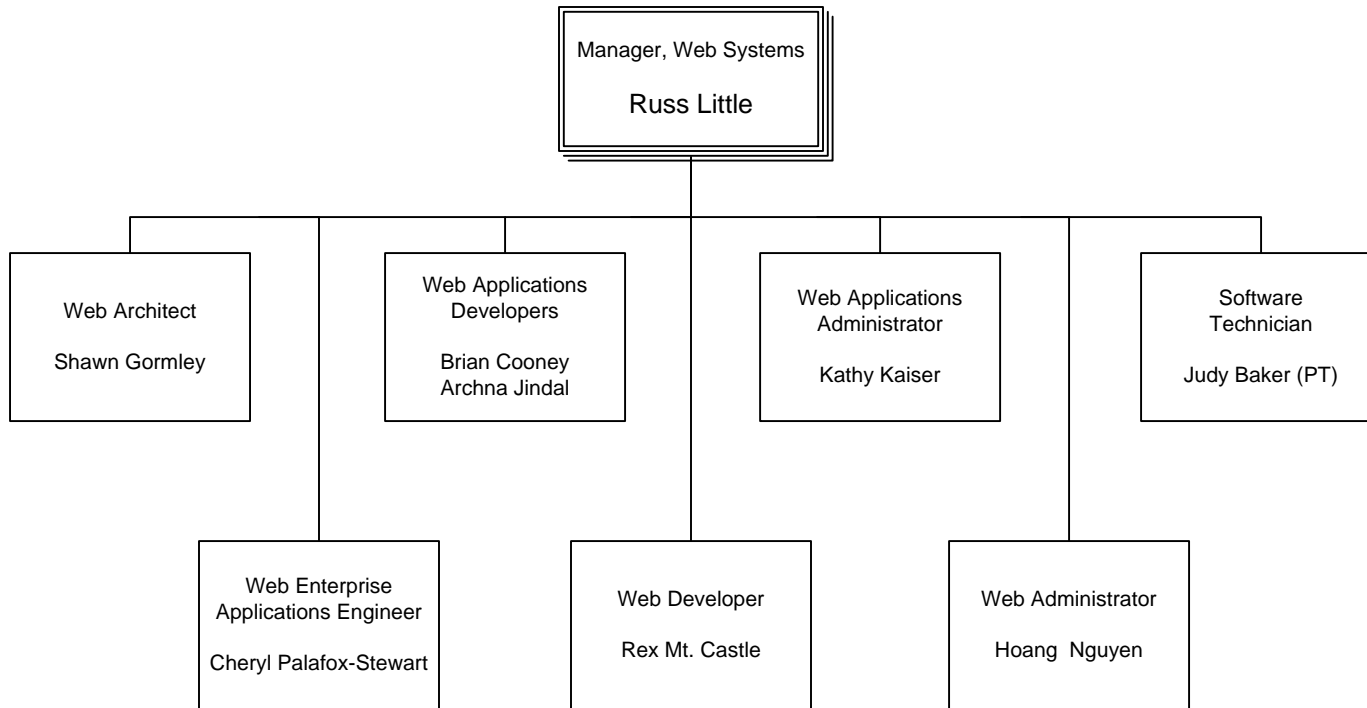
Senior Vice President Ken Moore's Division



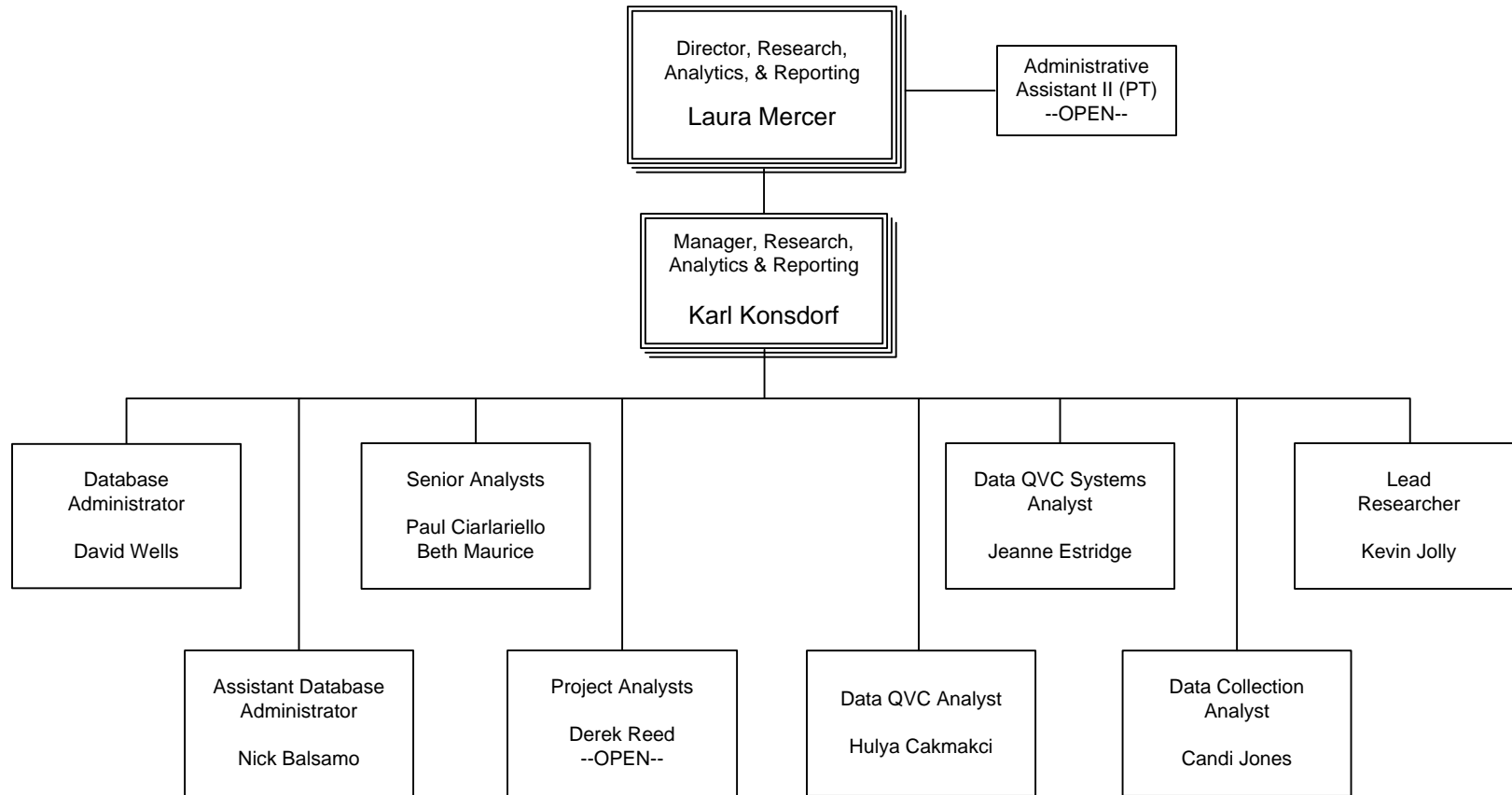
Senior Vice President Ken Moore's Division



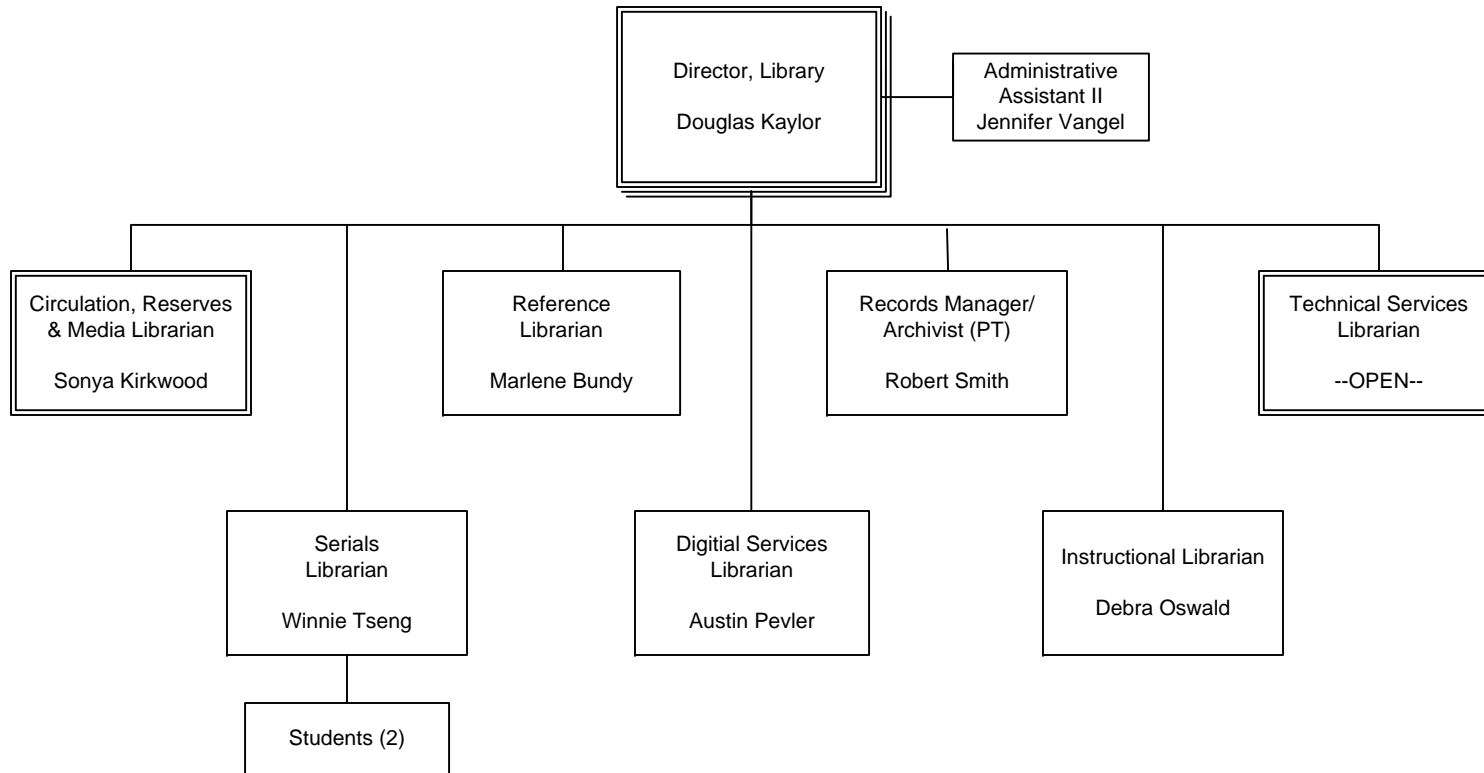
Senior Vice President Ken Moore's Division



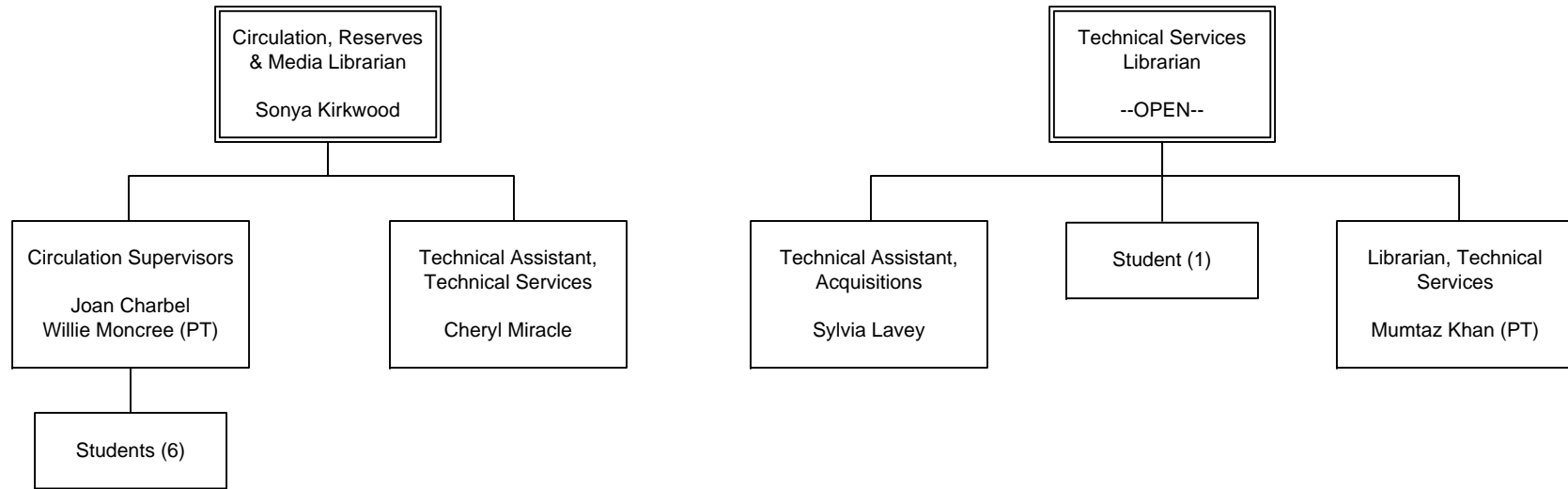
Senior Vice President Ken Moore's Division



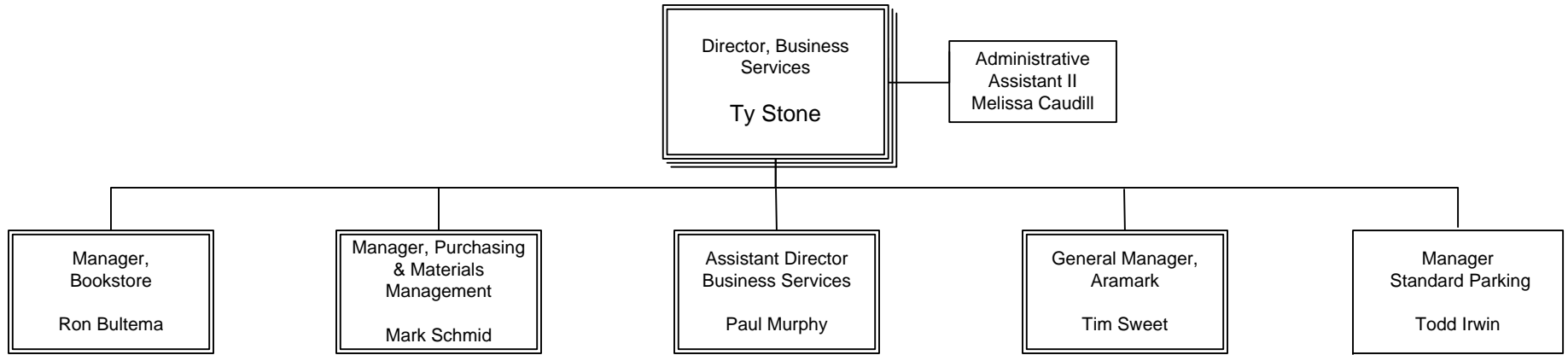
Senior Vice President Ken Moore's Division



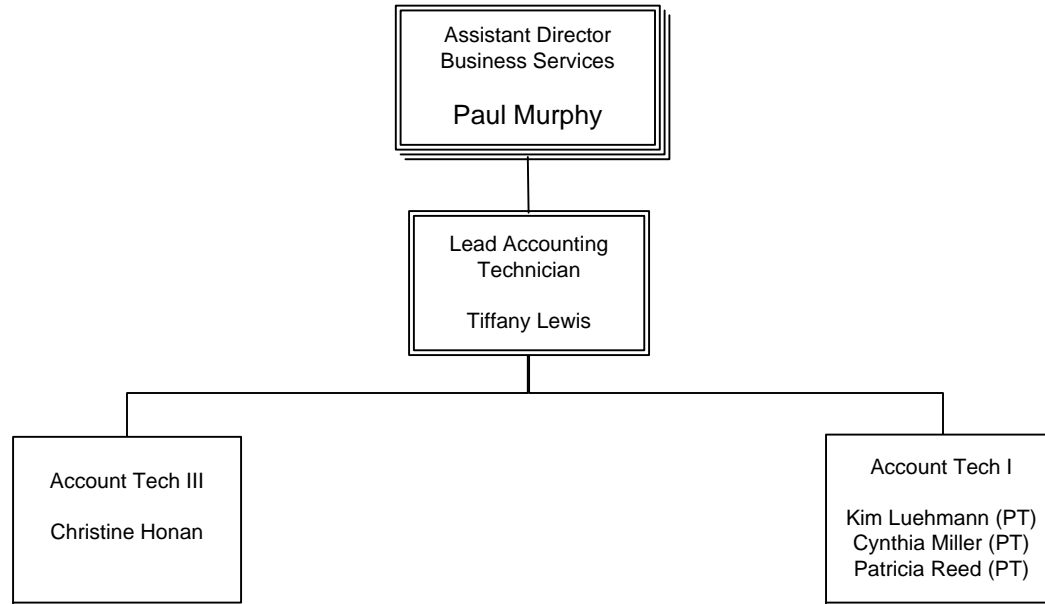
Senior Vice President Ken Moore's Division



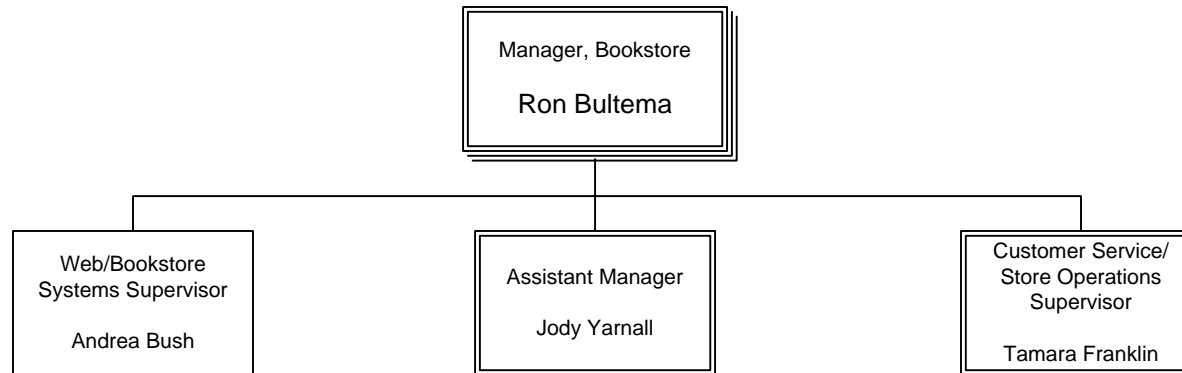
Senior Vice President Ken Moore's Division



Senior Vice President Ken Moore's Division

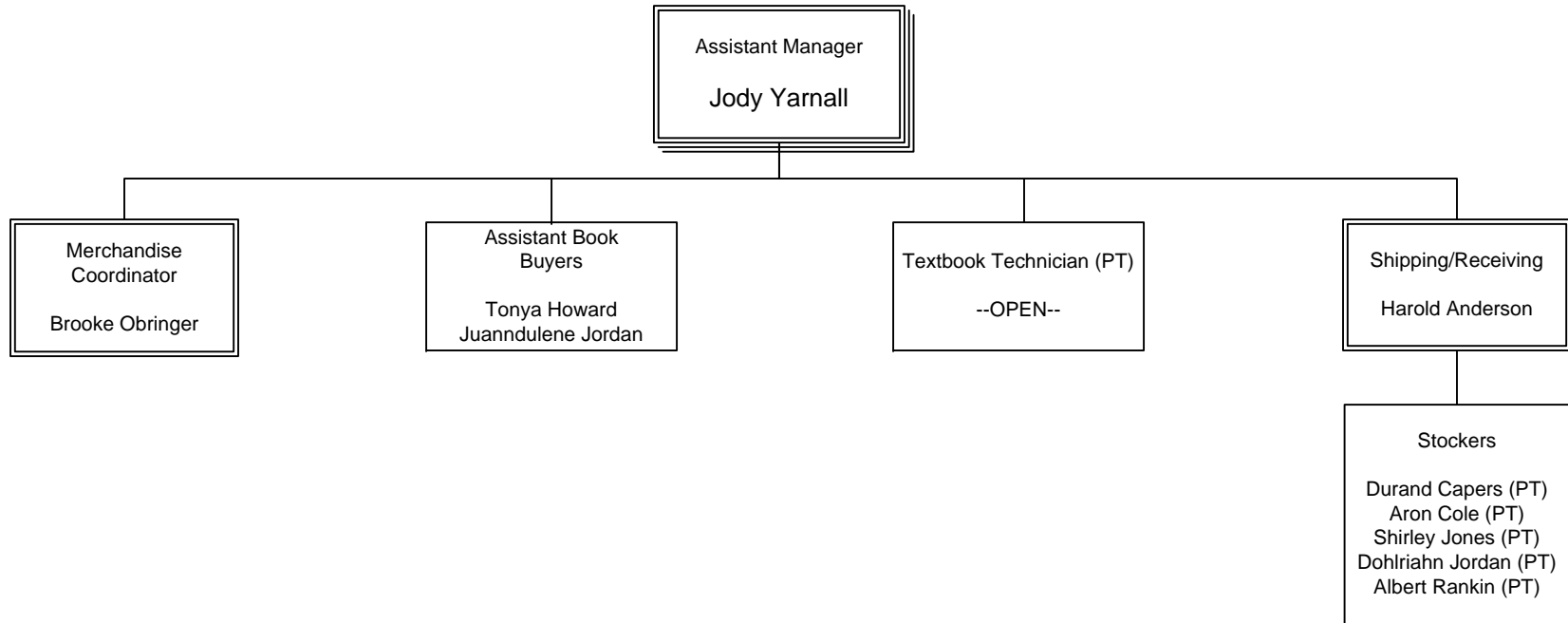


Senior Vice President Ken Moore's Division

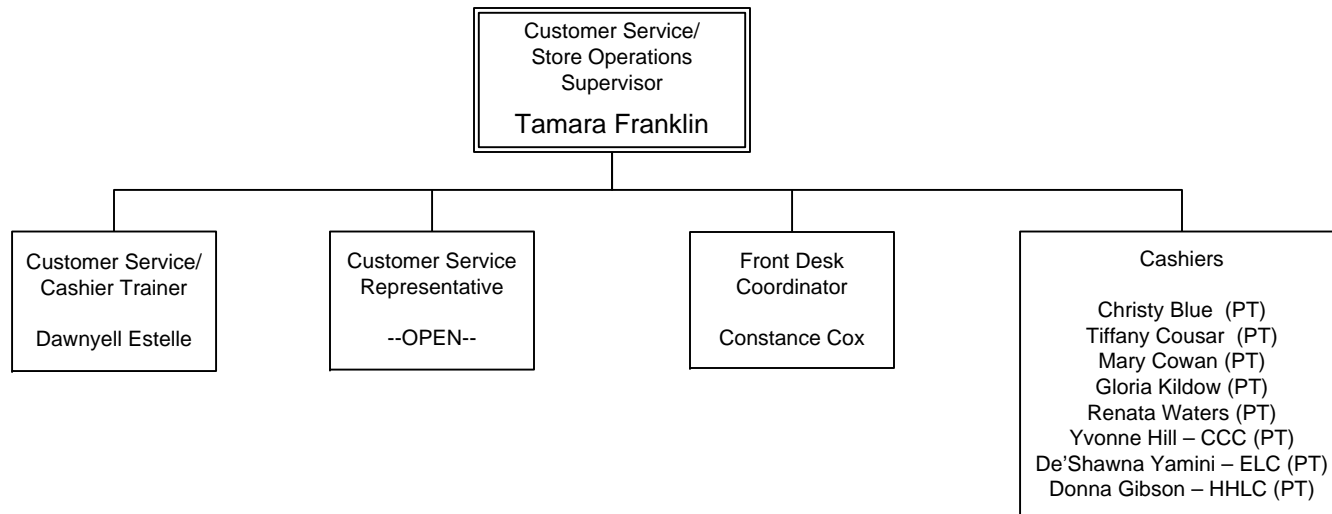


NOTE: Number of casual (temporary/seasonal) student & regular employees = 130

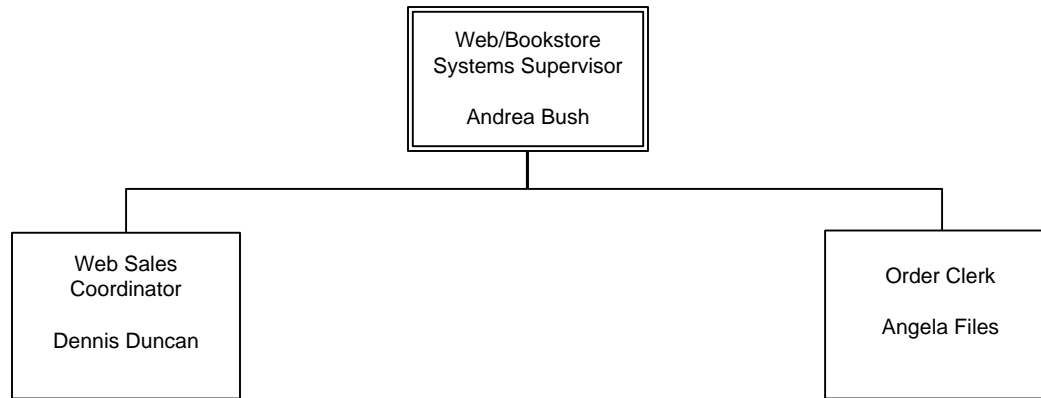
Senior Vice President Ken Moore's Division



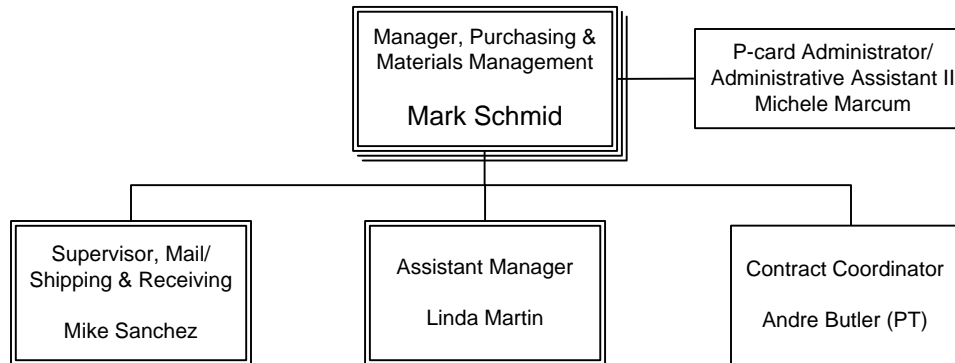
Senior Vice President Ken Moore's Division



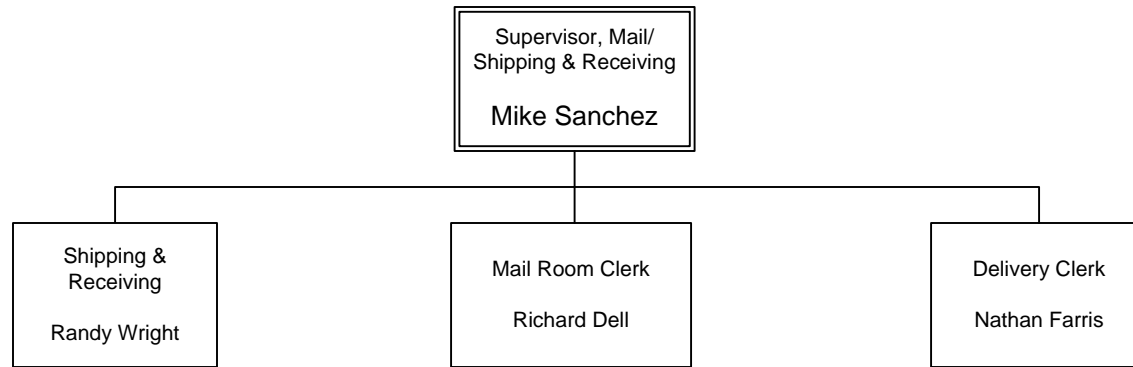
Senior Vice President Ken Moore's Division



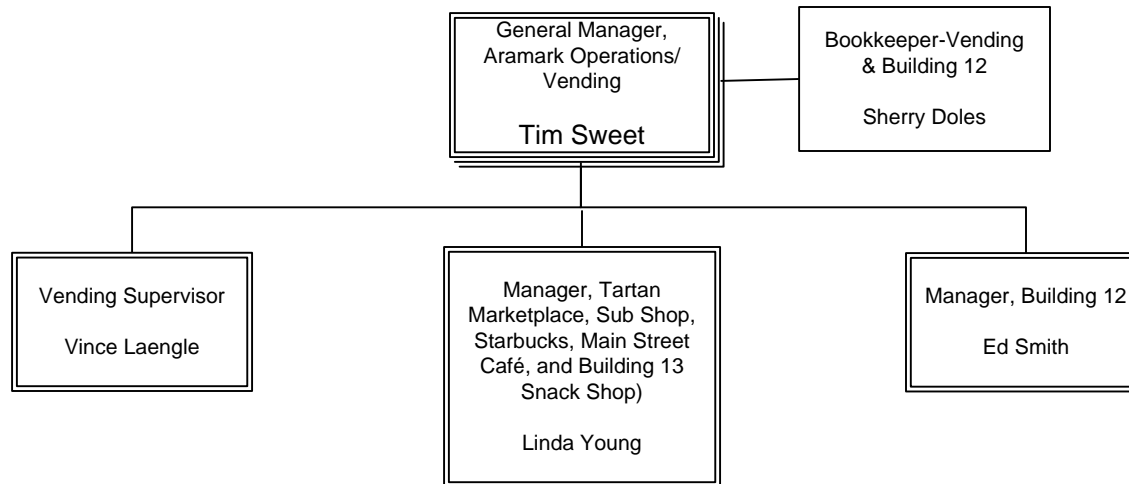
Senior Vice President Ken Moore's Division



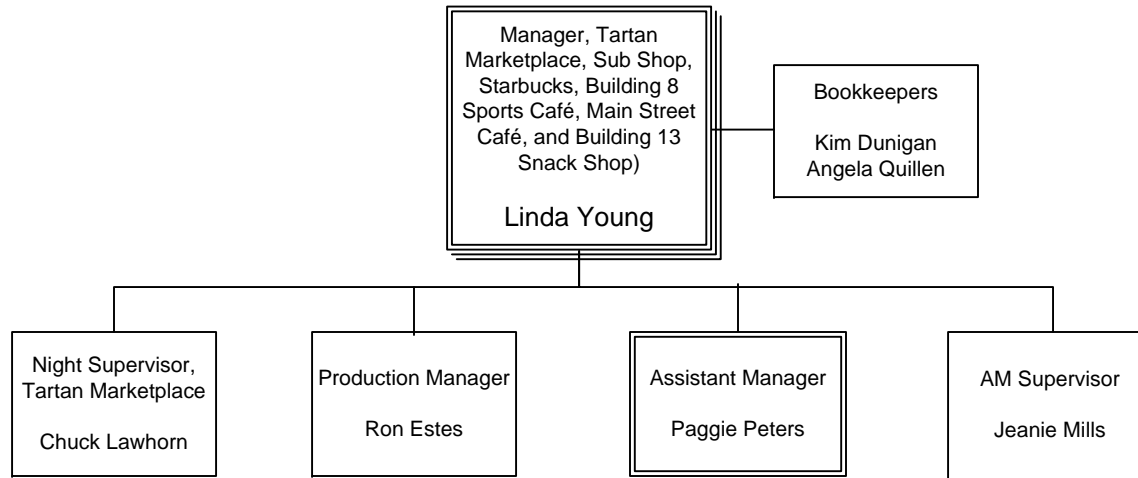
Senior Vice President Ken Moore's Division



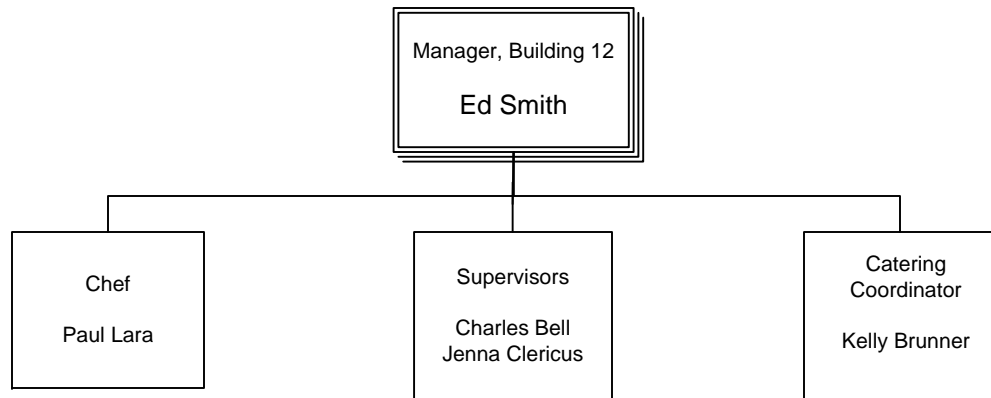
Senior Vice President Ken Moore's Division



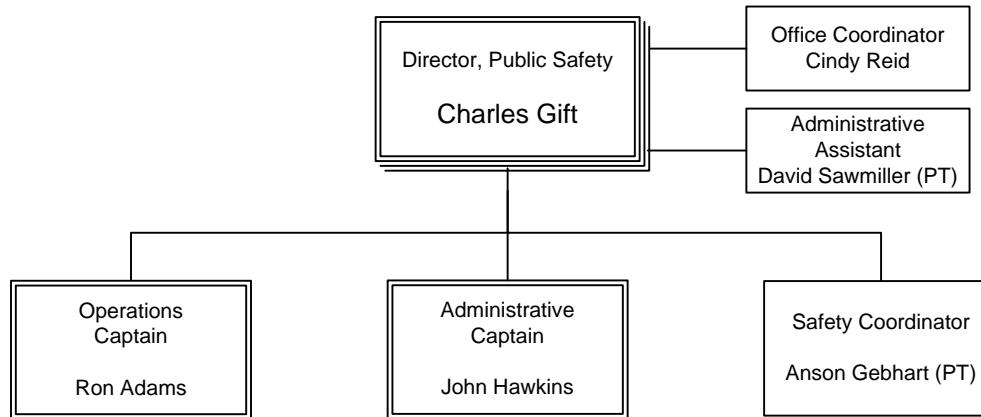
Senior Vice President Ken Moore's Division



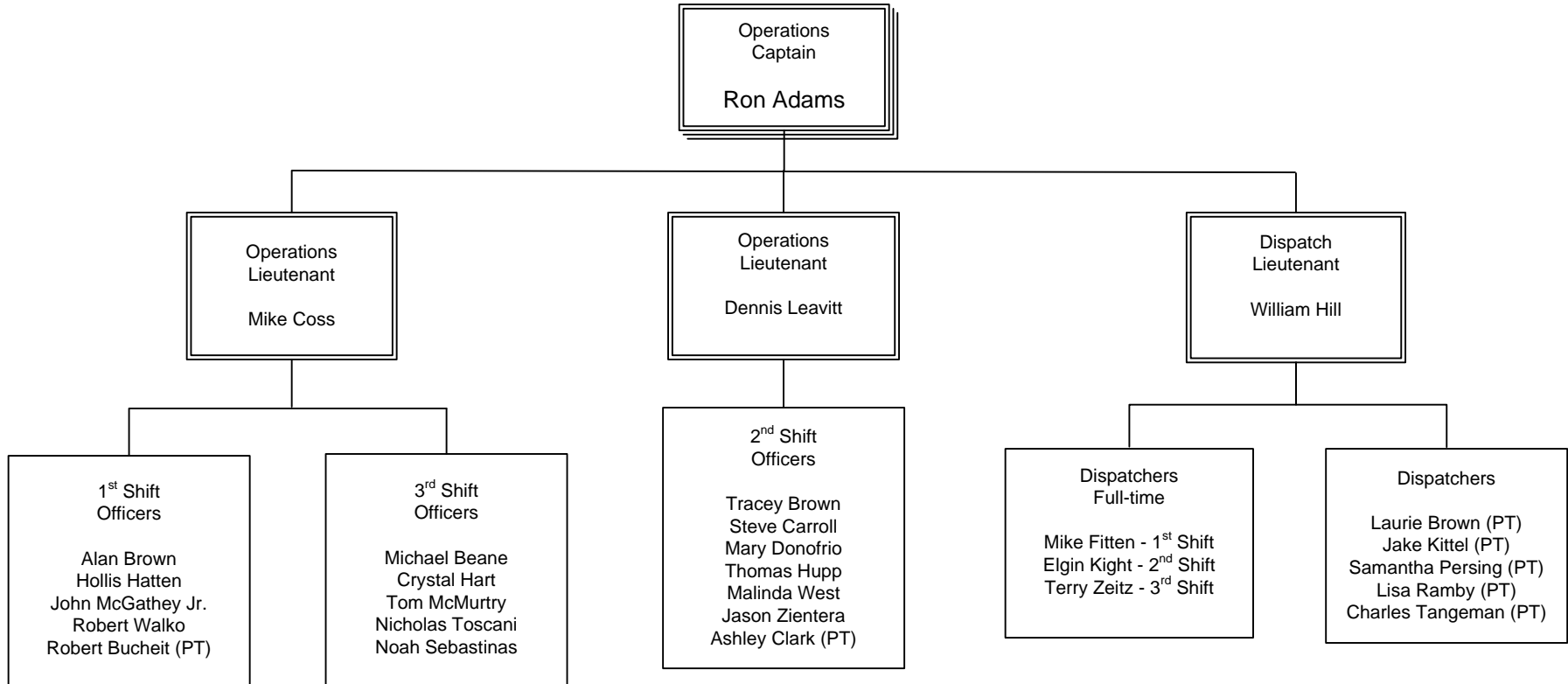
Senior Vice President Ken Moore's Division



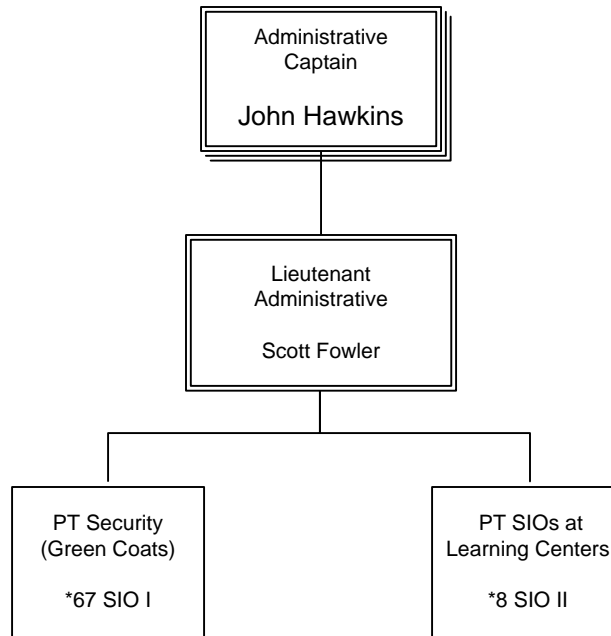
Senior Vice President Ken Moore's Division



Senior Vice President Ken Moore's Division



Senior Vice President Ken Moore's Division



NOTE: 4 SIO I also serve as SIO II