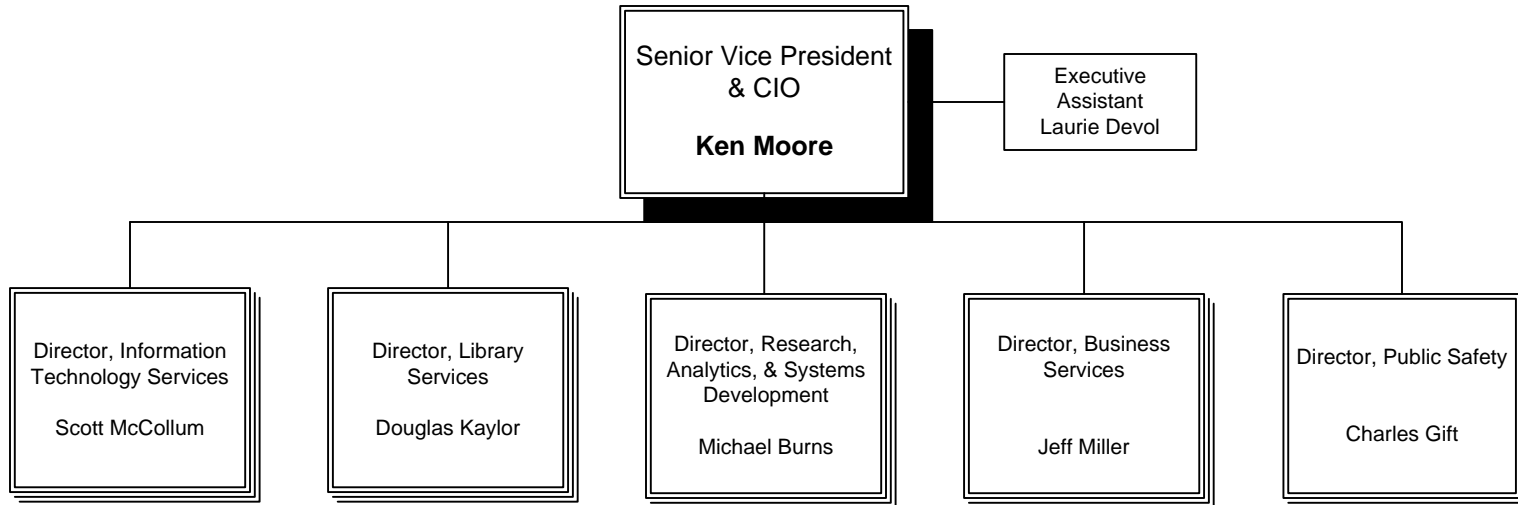
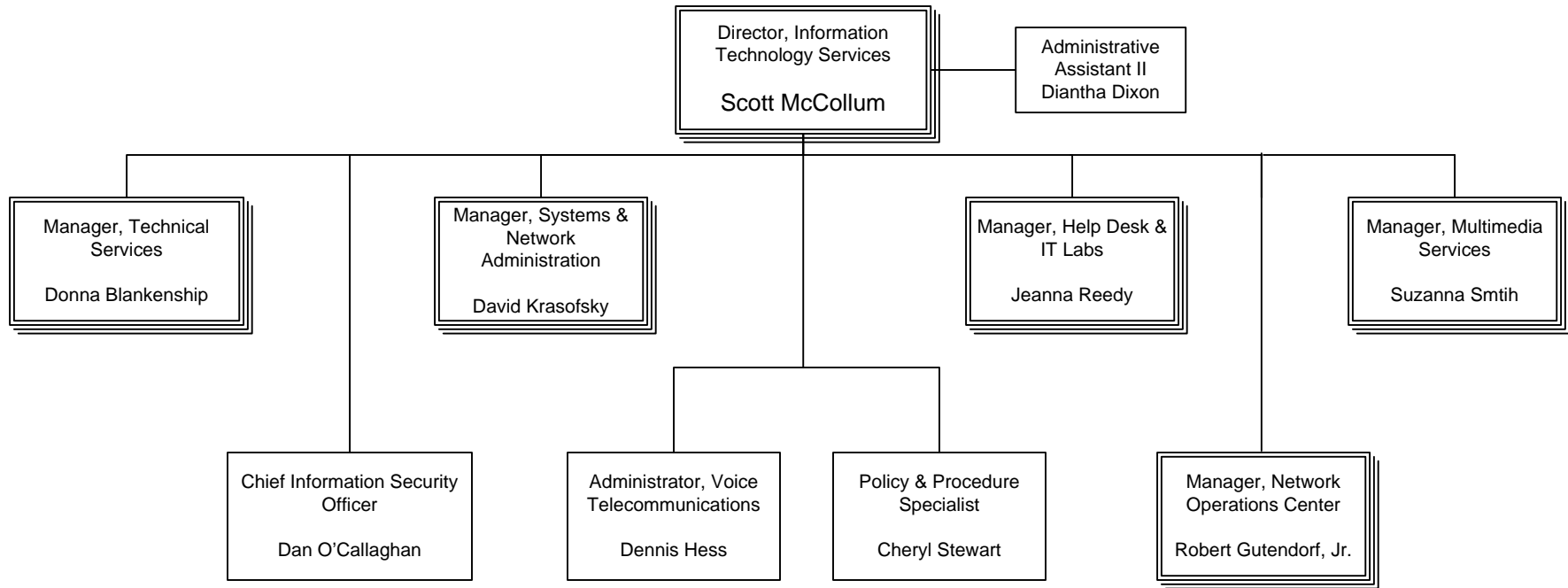


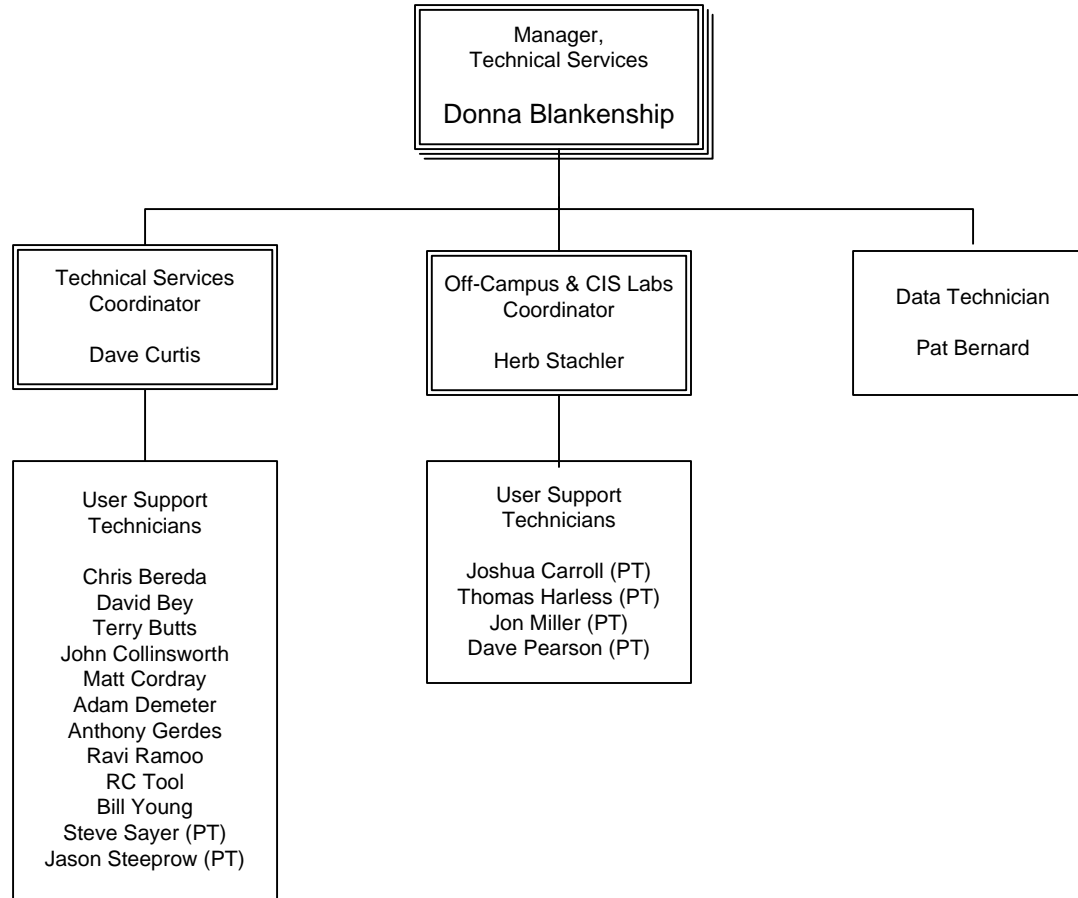
# Senior Vice President Ken Moore's Division



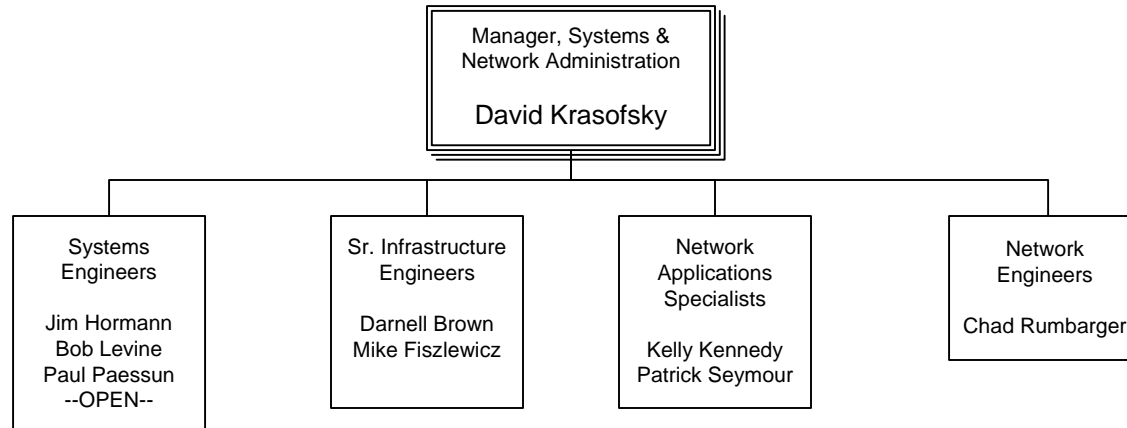
# Senior Vice President Ken Moore's Division



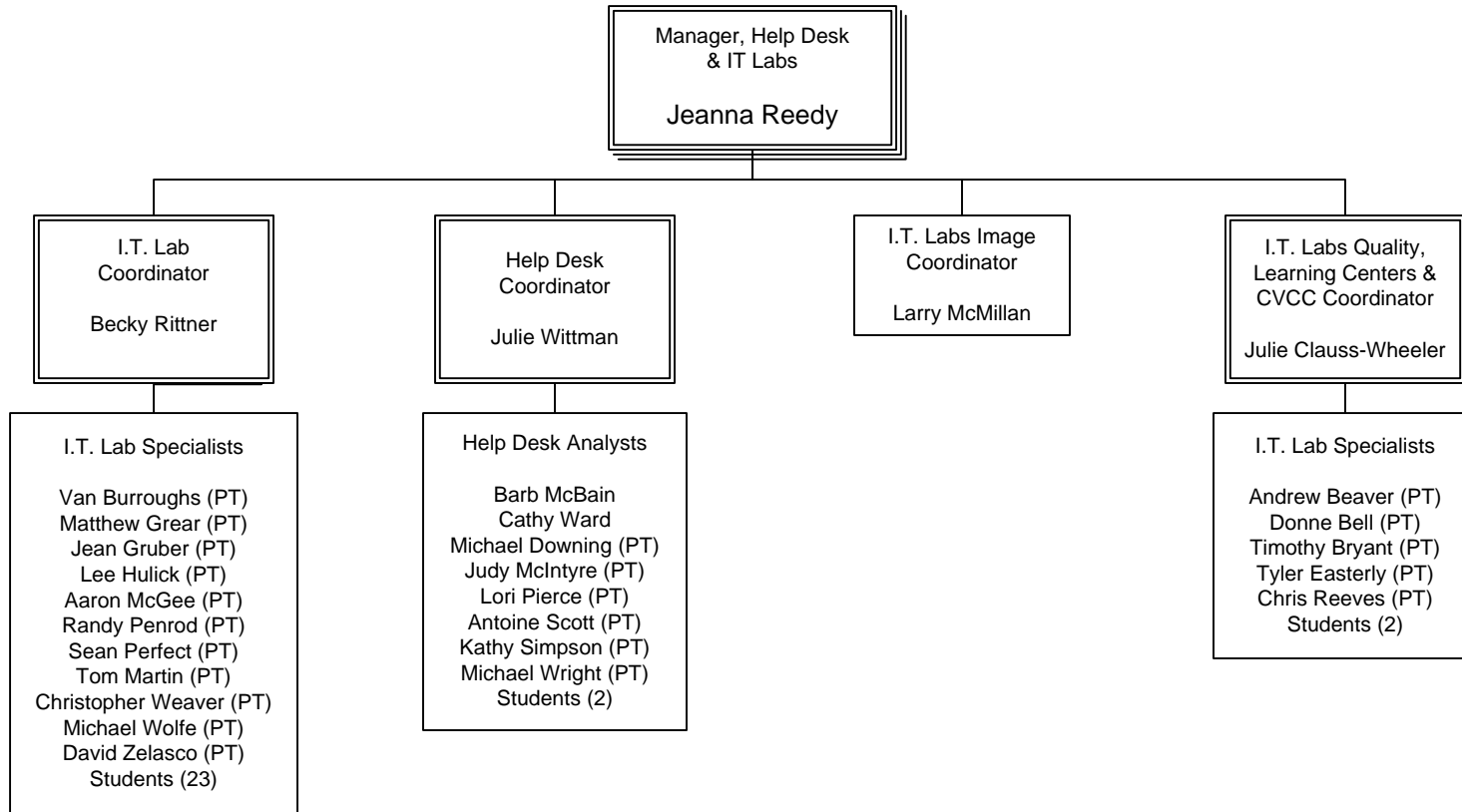
# Senior Vice President Ken Moore's Division



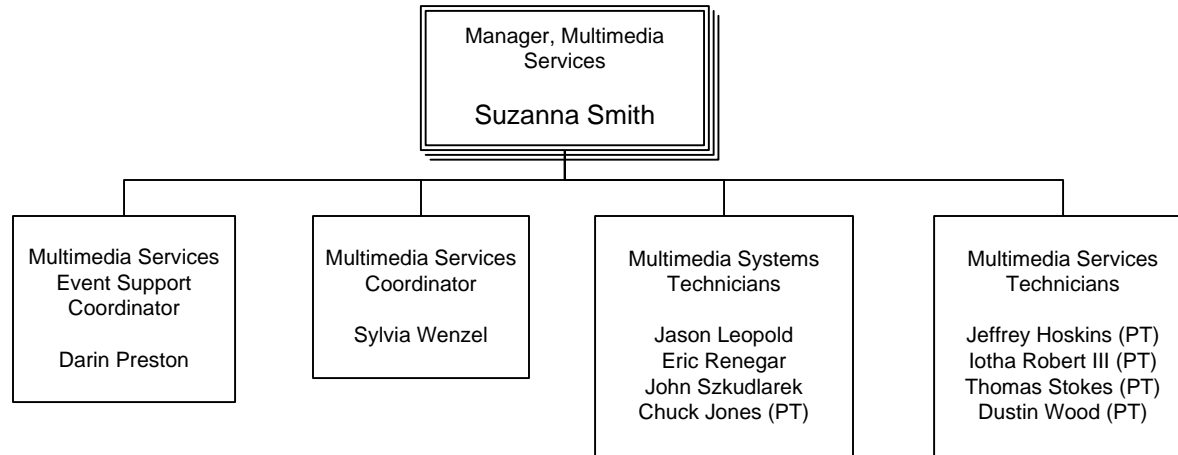
# Senior Vice President Ken Moore's Division



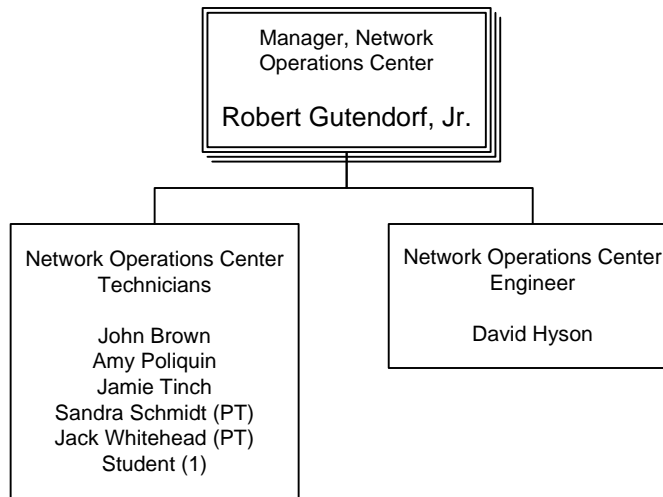
# Senior Vice President Ken Moore's Division



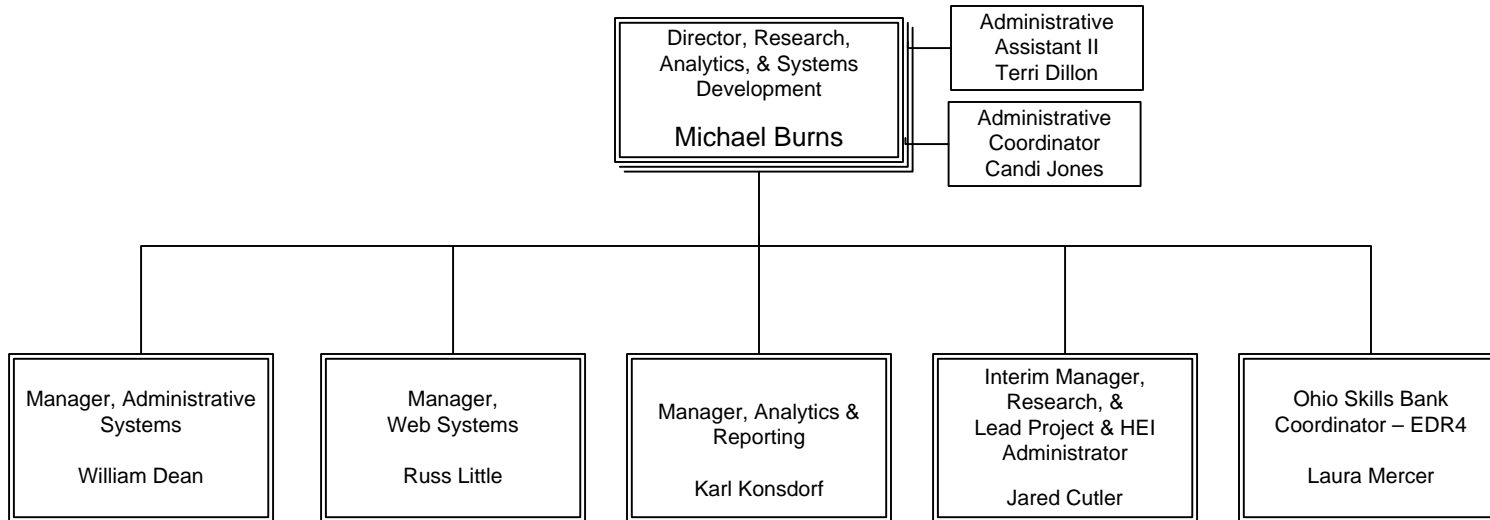
## Senior Vice President Ken Moore's Division



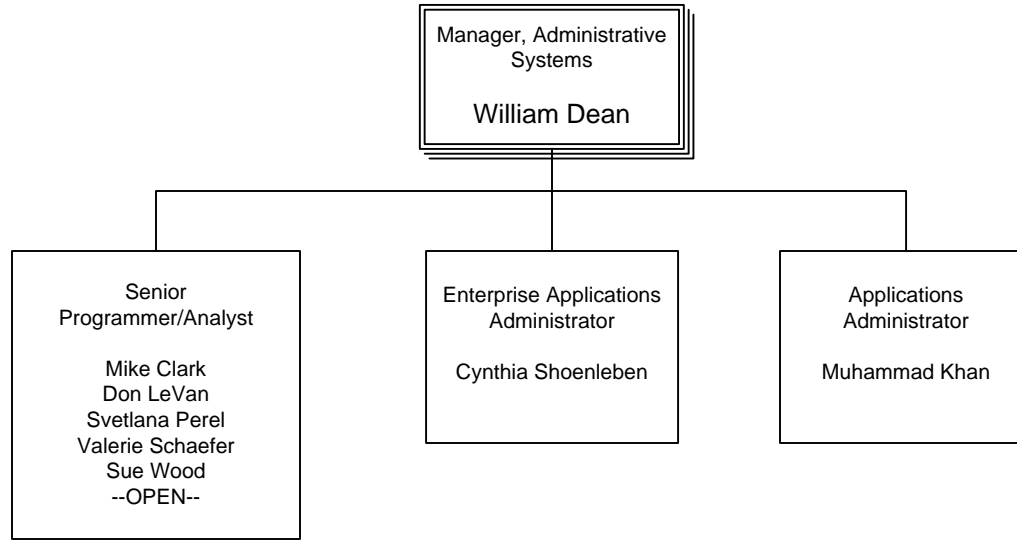
## Senior Vice President Ken Moore's Division



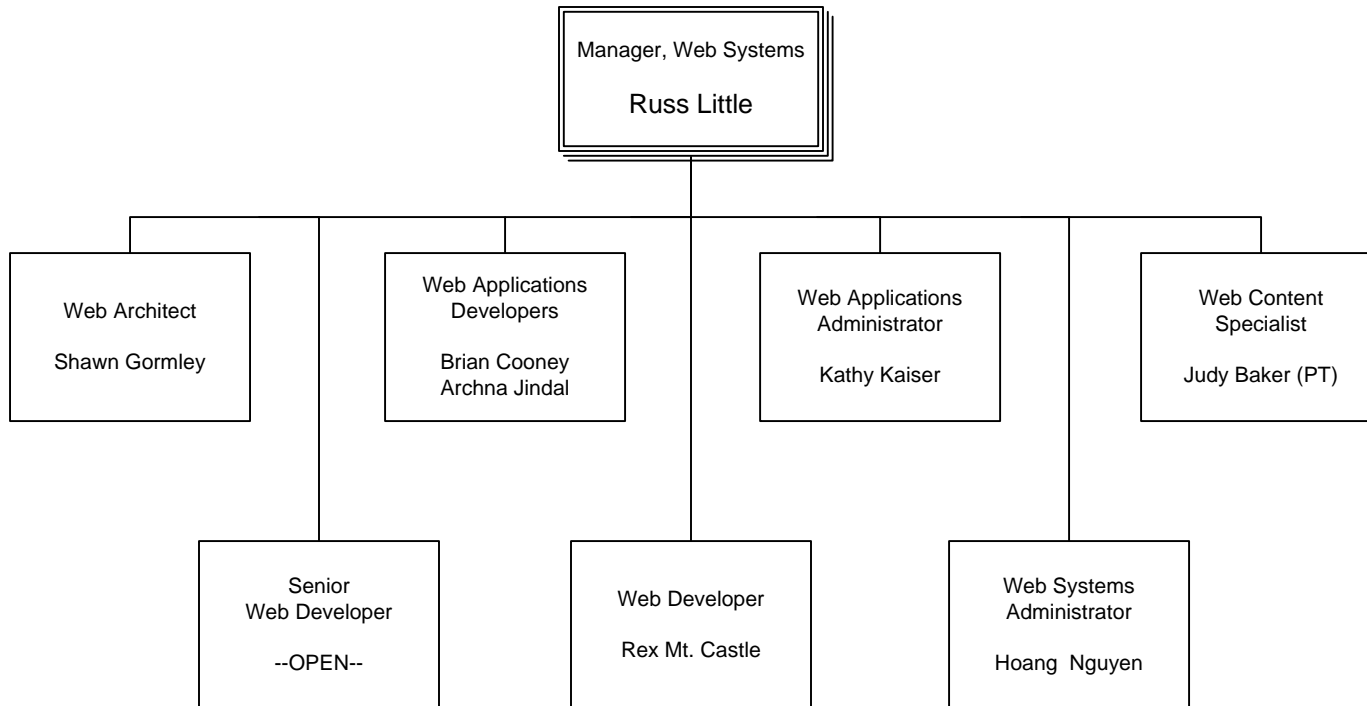
# Senior Vice President Ken Moore's Division



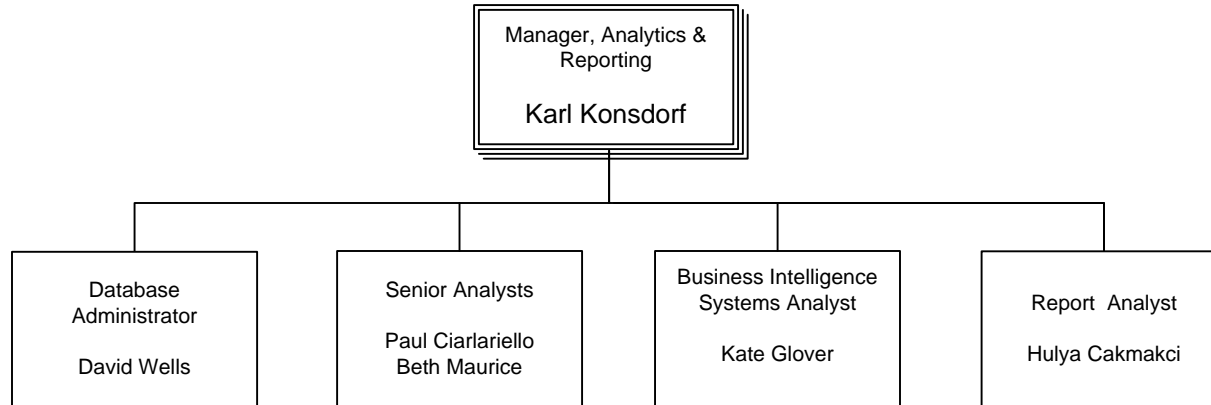
# Senior Vice President Ken Moore's Division



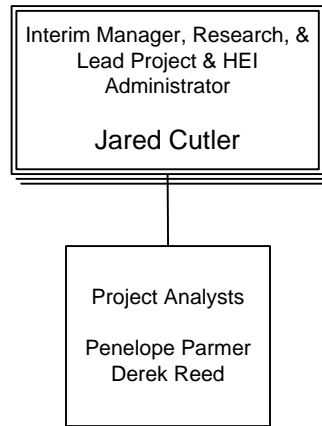
# Senior Vice President Ken Moore's Division



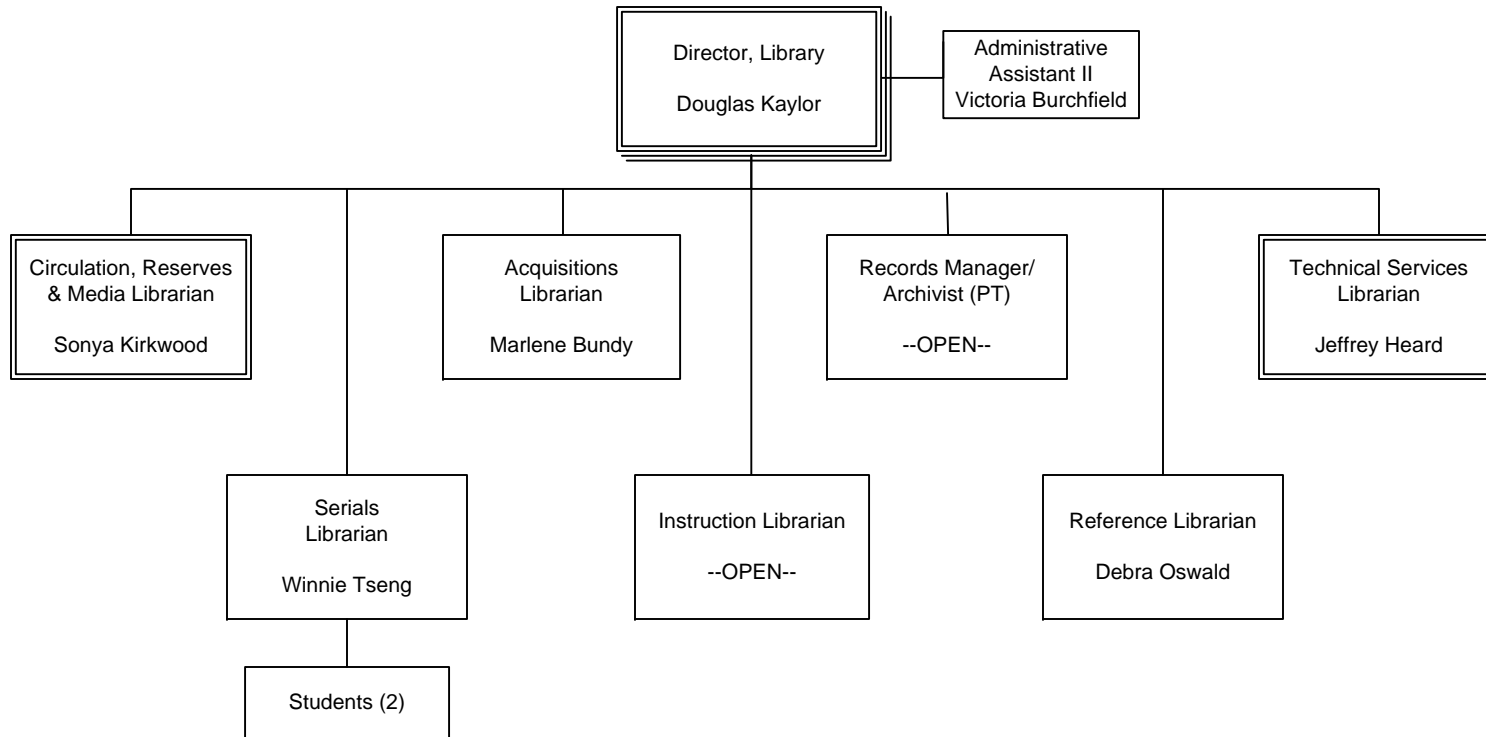
## Senior Vice President Ken Moore's Division



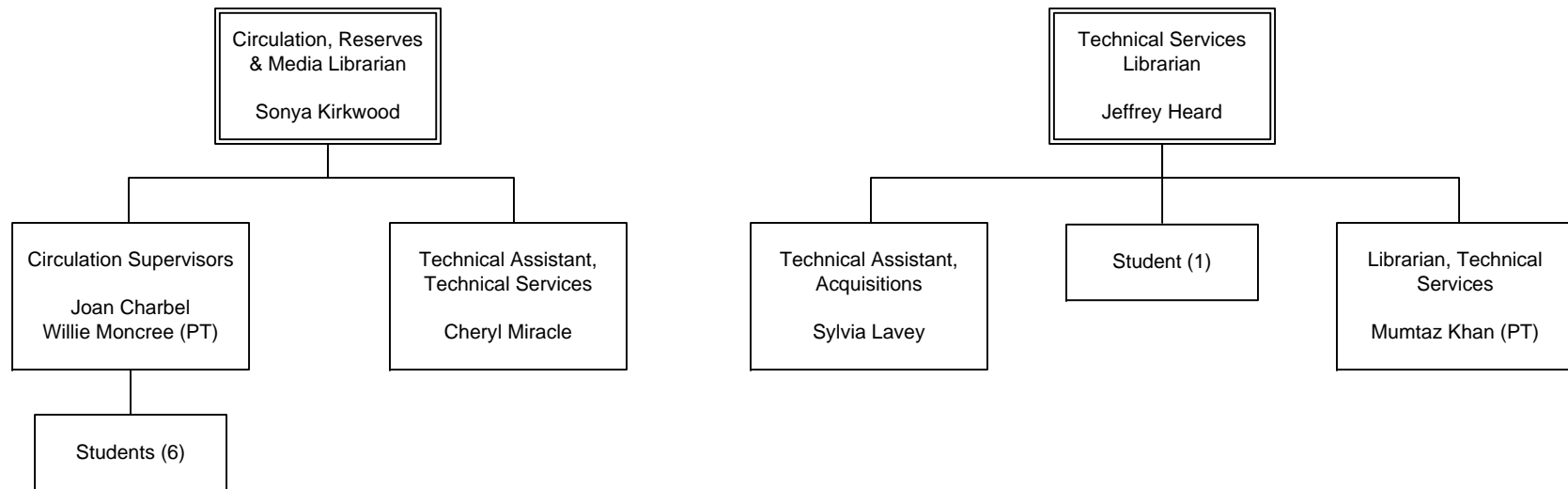
## Senior Vice President Ken Moore's Division



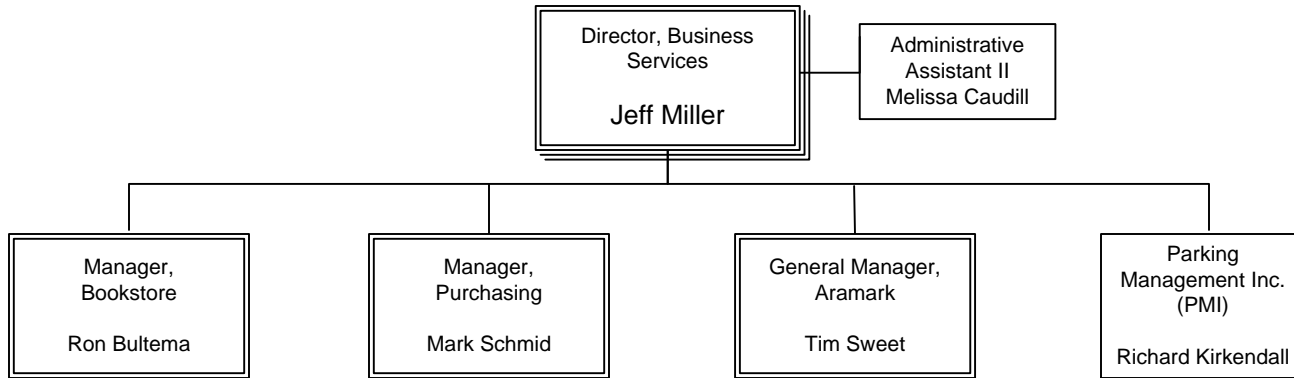
# Senior Vice President Ken Moore's Division



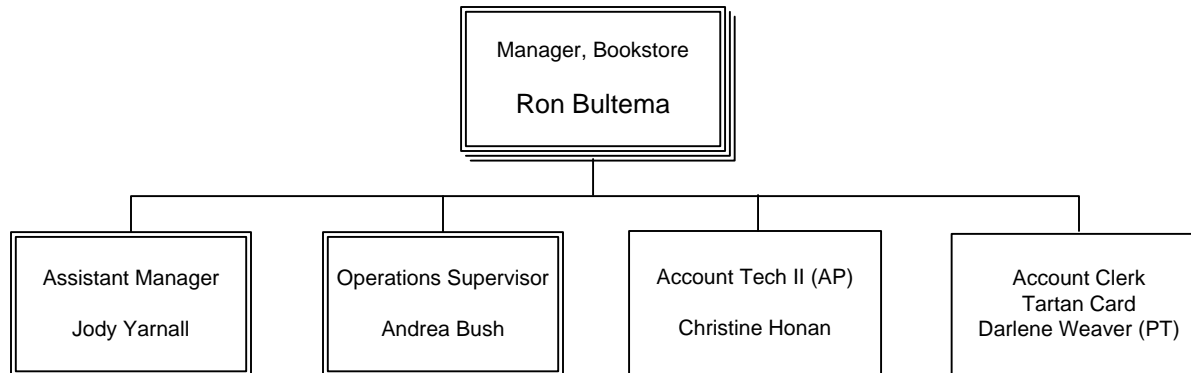
## Senior Vice President Ken Moore's Division



## Senior Vice President Ken Moore's Division

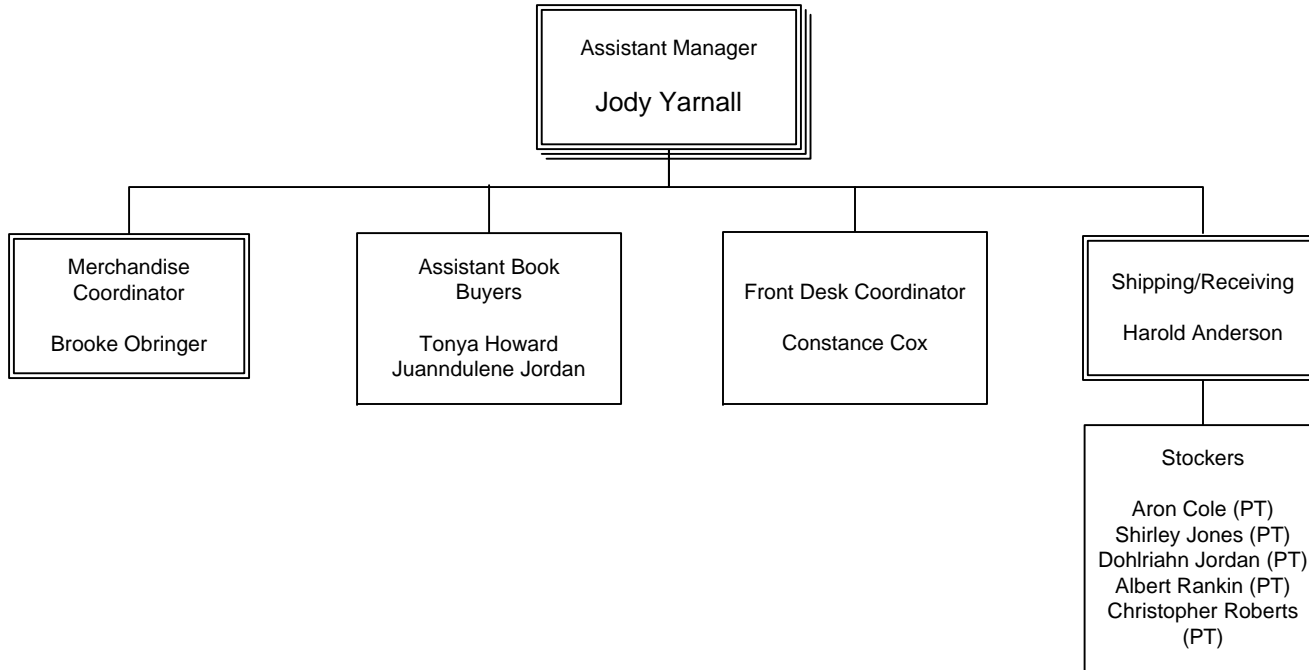


## Senior Vice President Ken Moore's Division

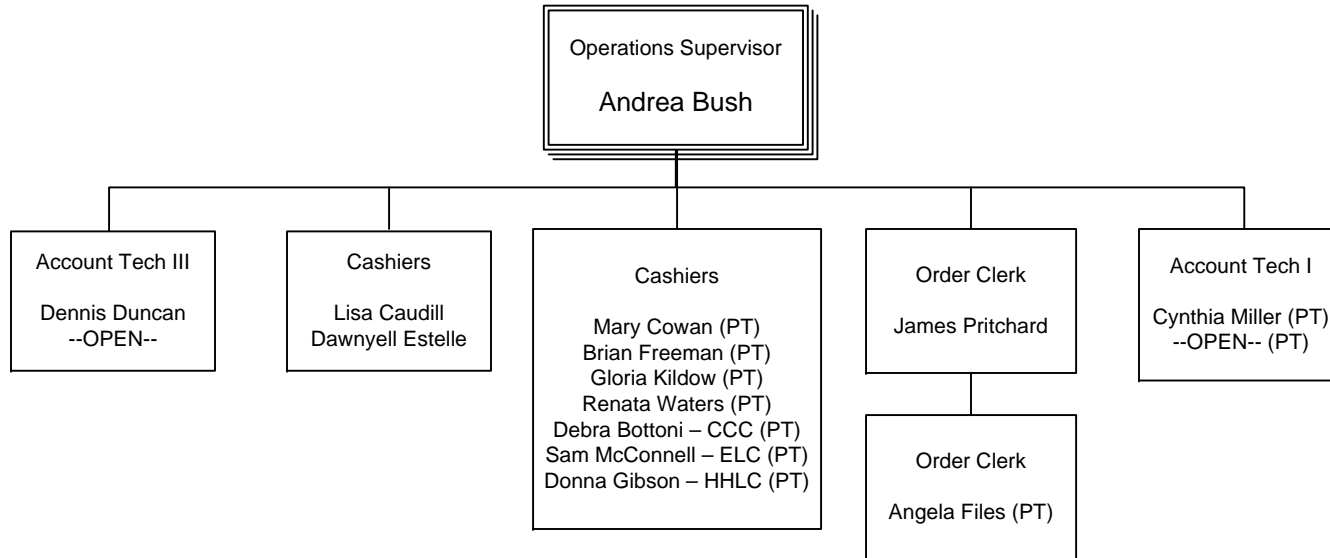


NOTE: Number of casual (temporary/seasonal) student & regular employees = 60

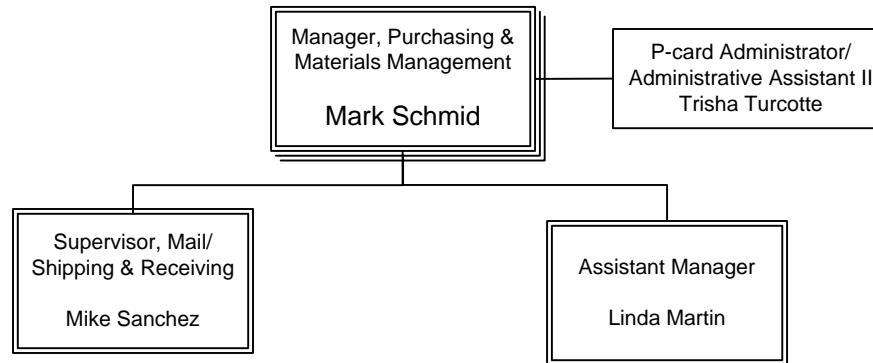
## Senior Vice President Ken Moore's Division



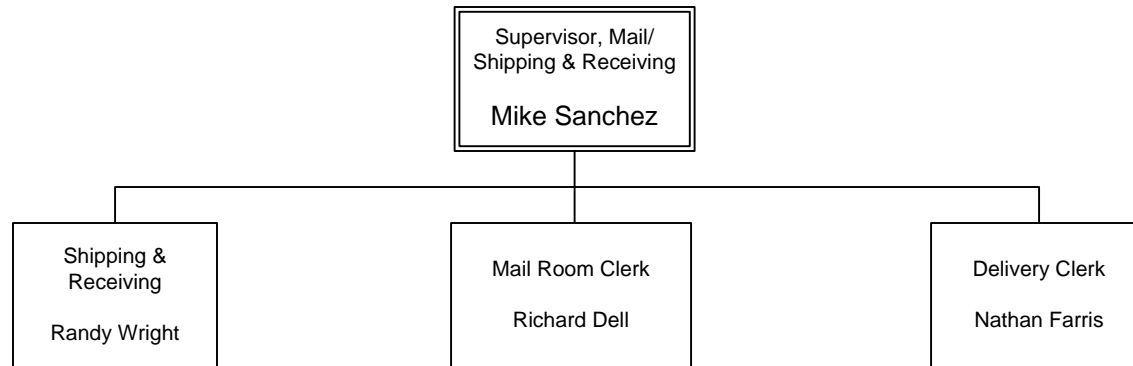
# Senior Vice President Ken Moore's Division



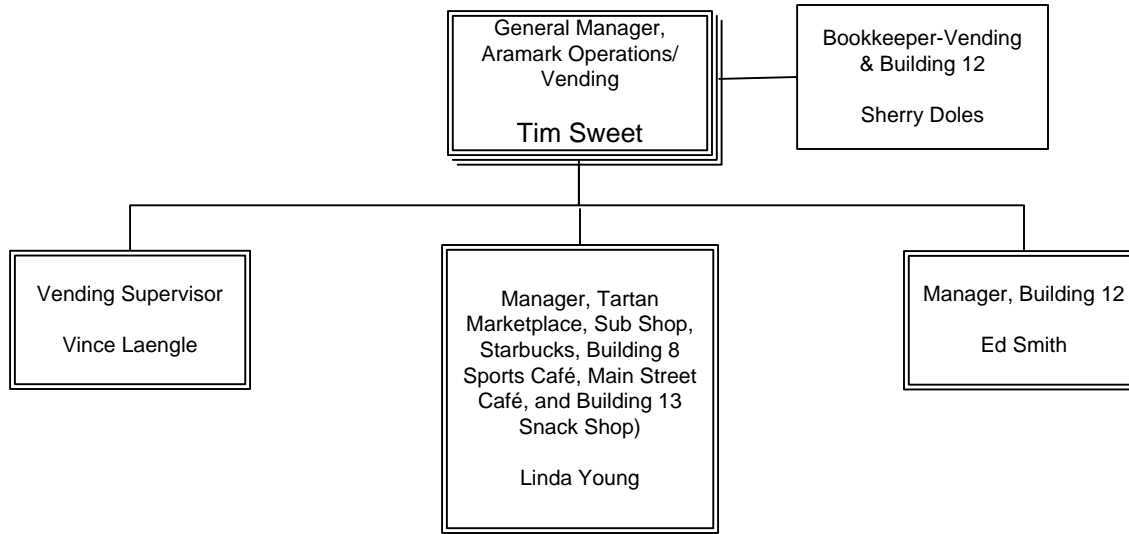
## Senior Vice President Ken Moore's Division



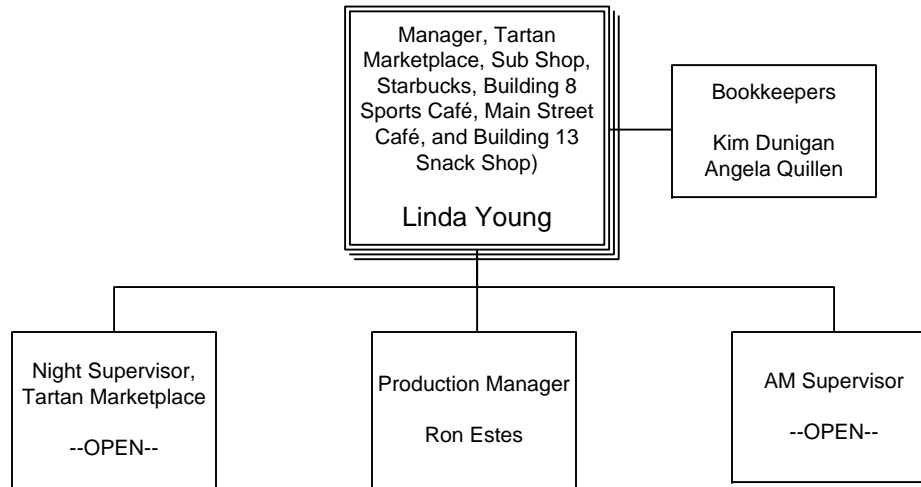
## Senior Vice President Ken Moore's Division



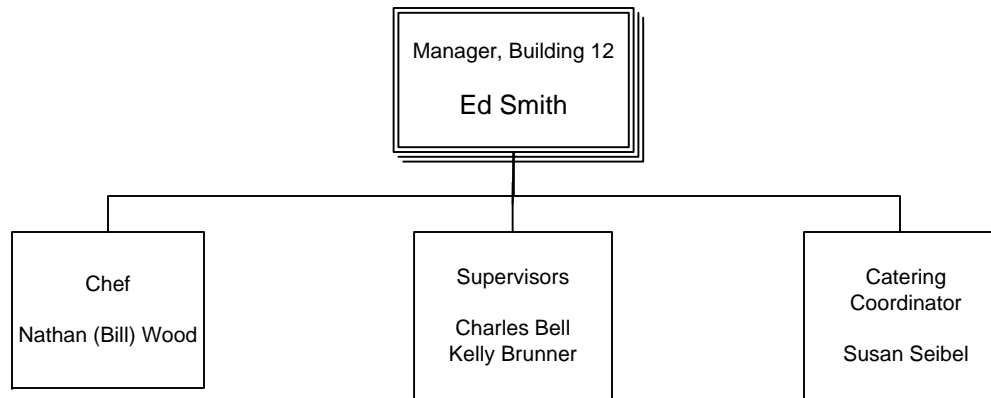
# Senior Vice President Ken Moore's Division



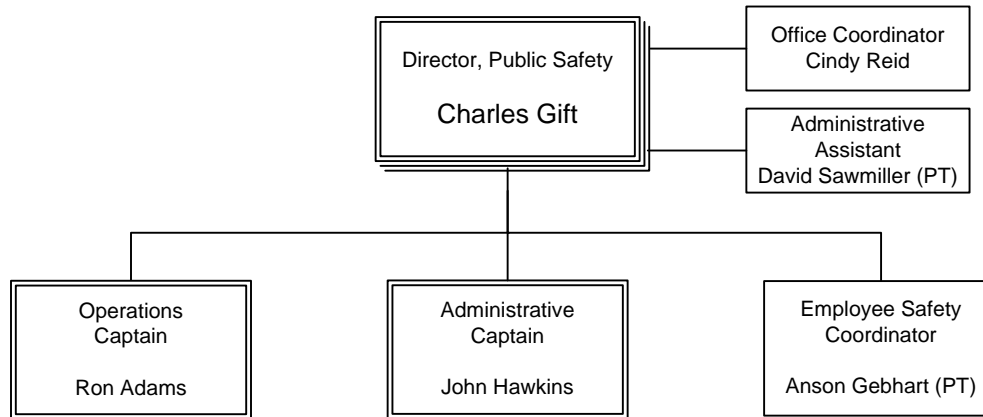
# Senior Vice President Ken Moore's Division



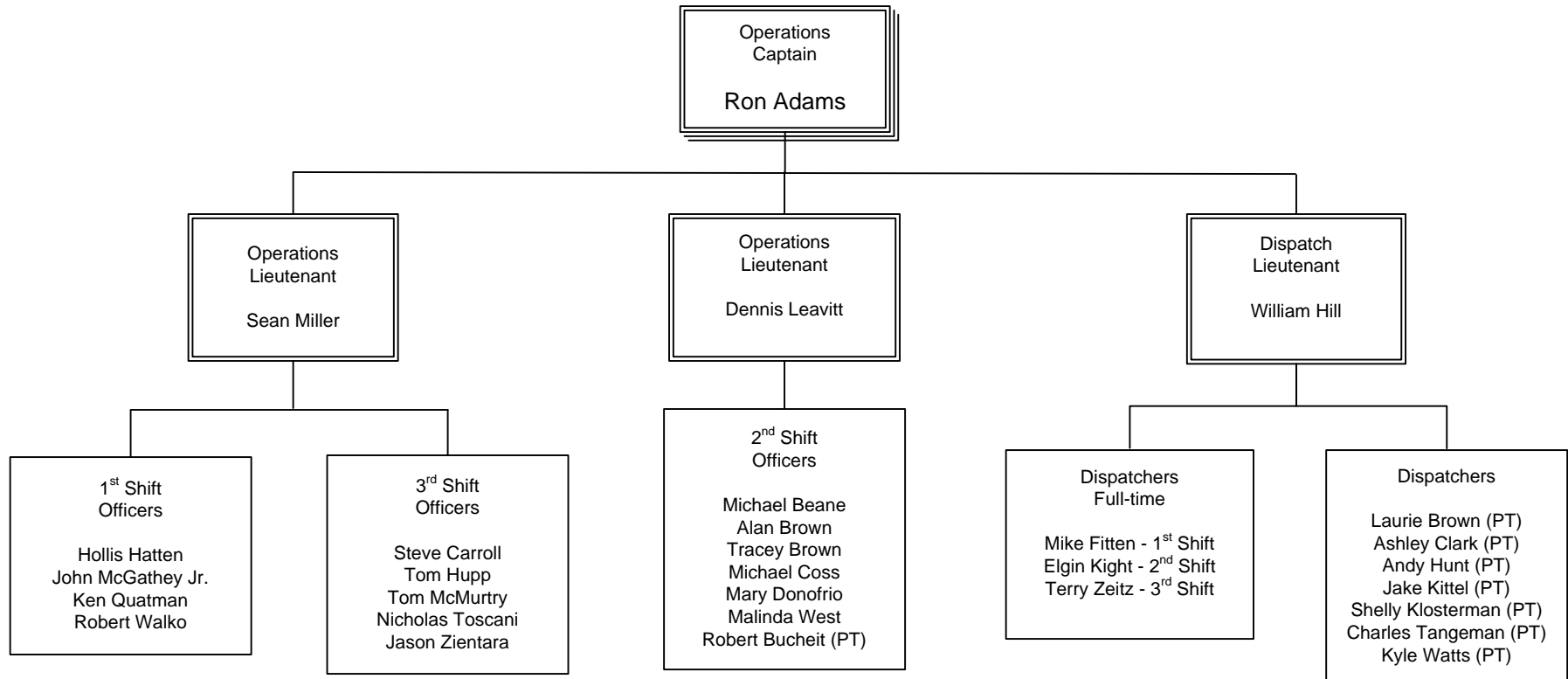
## Senior Vice President Ken Moore's Division



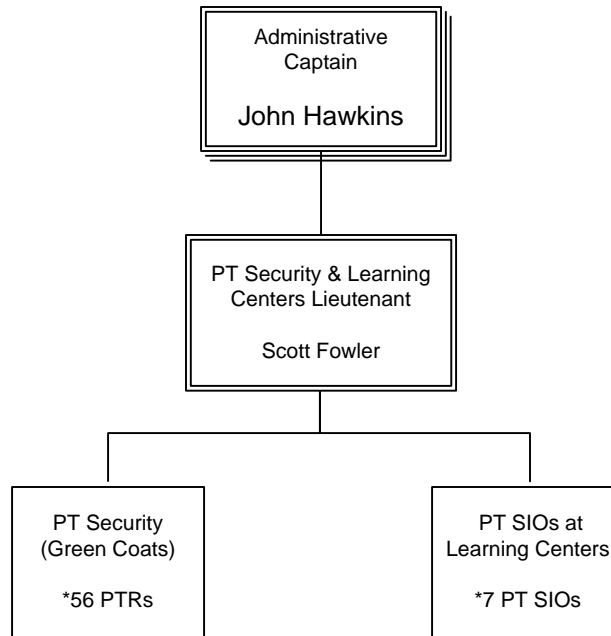
## Senior Vice President Ken Moore's Division



# Senior Vice President Ken Moore's Division



## Senior Vice President Ken Moore's Division



NOTE: 4 PTRs also serve as SIOs